

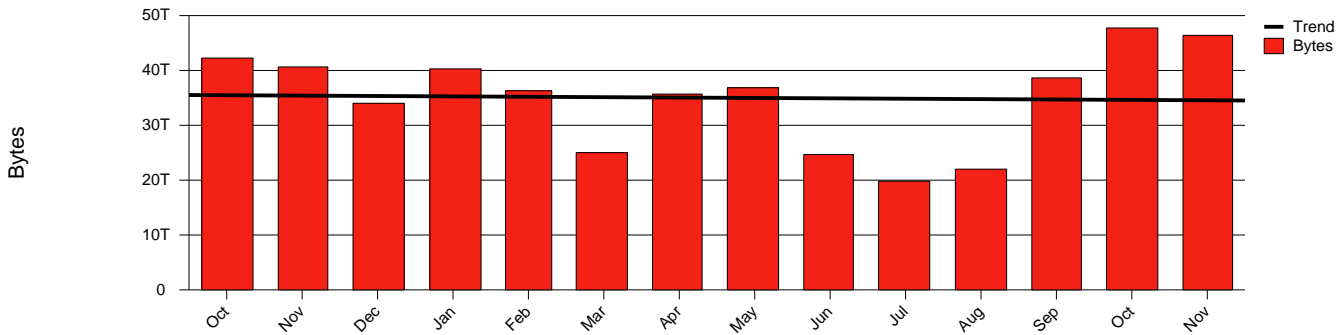
Monthly Health Report

Report for 2006/11/30, Subject: SUNET-A-KRISTIANSTAD-HKR

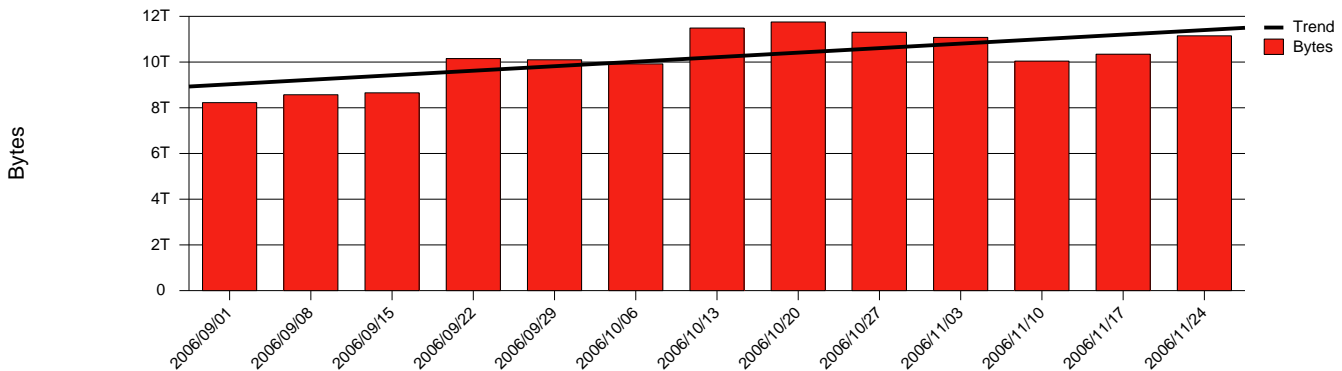


LAN/WAN

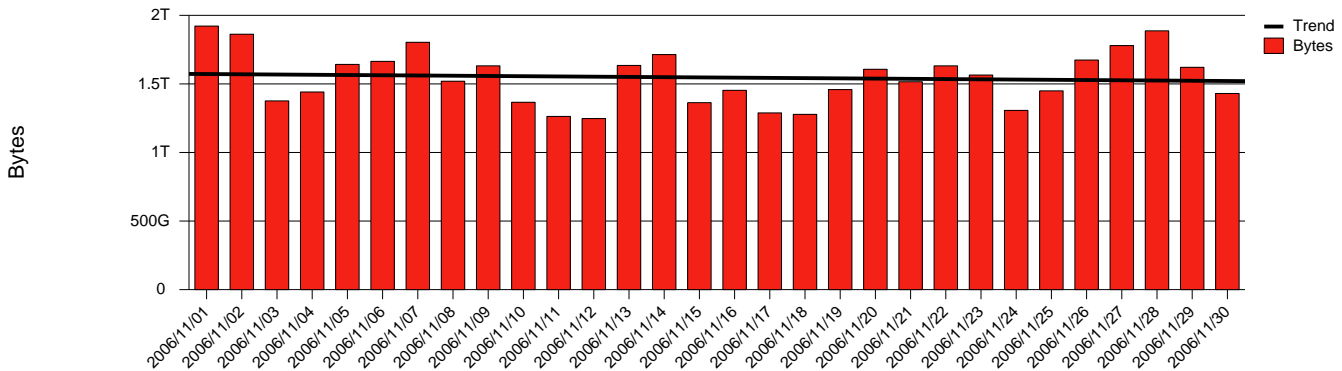
Total Network Volume by Month



Total Network Volume by Week



Total Network Volume by Day



Situations to Watch

| Rank | Element Name | Variable | Threshold | Monthly Average | | Days to (from) Threshold |
|------|---------------|----------------------|-----------|-----------------|-----------|--------------------------|
| | | | Value | Actual | Predicted | |
| 1 | hkr1-SRP(Out) | Volume (Bandwidth %) | 80.000 | 3.998 | 2.689 | Increasing |
| 2 | hkr2-SRP(In) | Volume (Bandwidth %) | 80.000 | 0.003 | 0.018 | Increasing |
| 3 | hkr1-SRP(In) | Errors (% Frames) | 5.000 | 0.000 | 0.000 | Increasing |
| 4 | hkr1-SRP(In) | Volume (Bandwidth %) | 80.000 | 1.757 | 1.267 | Decreasing |
| 5 | hkr2-SRP(Out) | Volume (Bandwidth %) | 80.000 | 0.000 | 0.285 | Decreasing |