

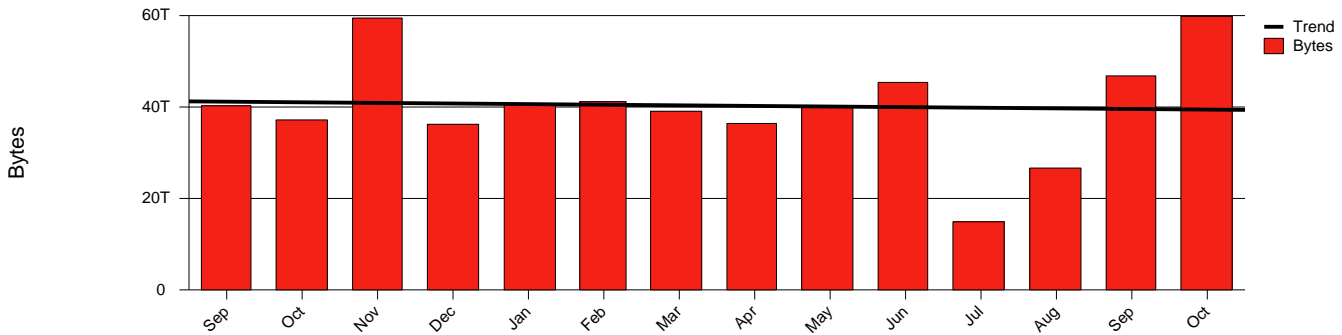
# Monthly Health Report

Report for 2005/10/31, Subject: SUNET-A-JONKOPING-HJ

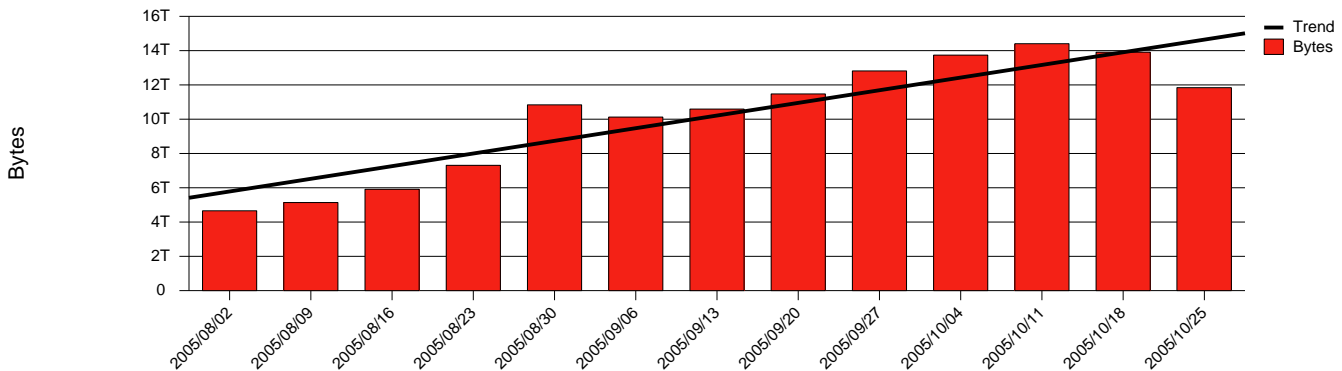


LAN/WAN

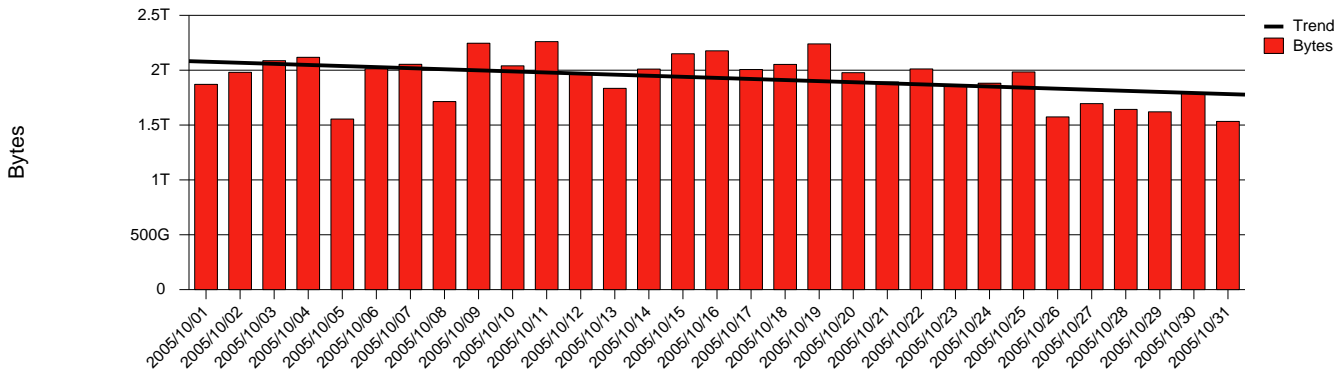
Total Network Volume by Month



Total Network Volume by Week



Total Network Volume by Day



Situations to Watch

| Rank | Element Name | Variable             | Threshold | Monthly Average |           | Days to (from) Threshold |
|------|--------------|----------------------|-----------|-----------------|-----------|--------------------------|
|      |              |                      | Value     | Actual          | Predicted |                          |
| 1    | hj1-SRP(In)  | Errors (% Frames)    | 5.000     | 0.000           | 0.380     | Increasing               |
| 2    | hj1-SRP(Out) | Volume (Bandwidth %) | 80.000    | 4.440           | 3.537     | Increasing               |
| 3    | hj1-SRP(In)  | Volume (Bandwidth %) | 80.000    | 2.344           | 0.936     | Decreasing               |
| 4    | hj2-SRP(In)  | Volume (Bandwidth %) | 80.000    | 0.392           | 0.793     | Decreasing               |
| 5    | hj2-SRP(In)  | Errors (% Frames)    | 5.000     | 0.000           | 0.000     | Decreasing               |
| 6    | hj2-SRP(Out) | Volume (Bandwidth %) | 80.000    | 0.000           | 0.000     | Decreasing               |