

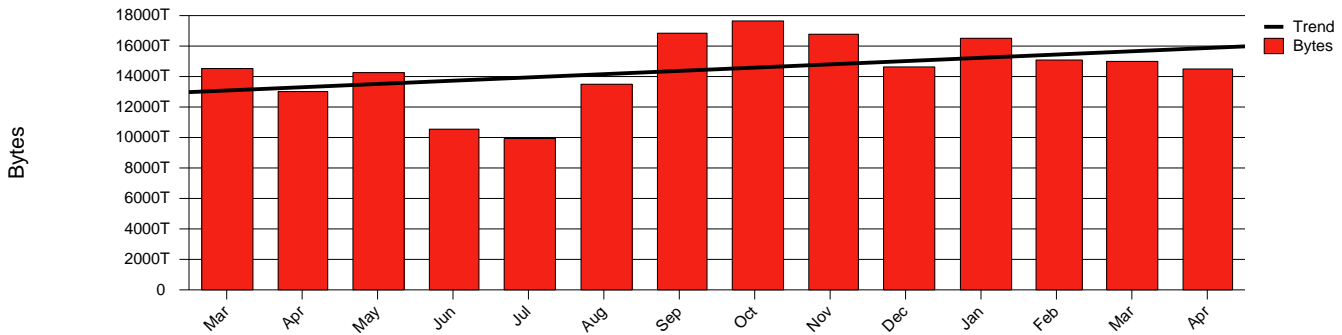
Monthly Health Report

Report for 2005/04/30, Subject: Giga-Sunet

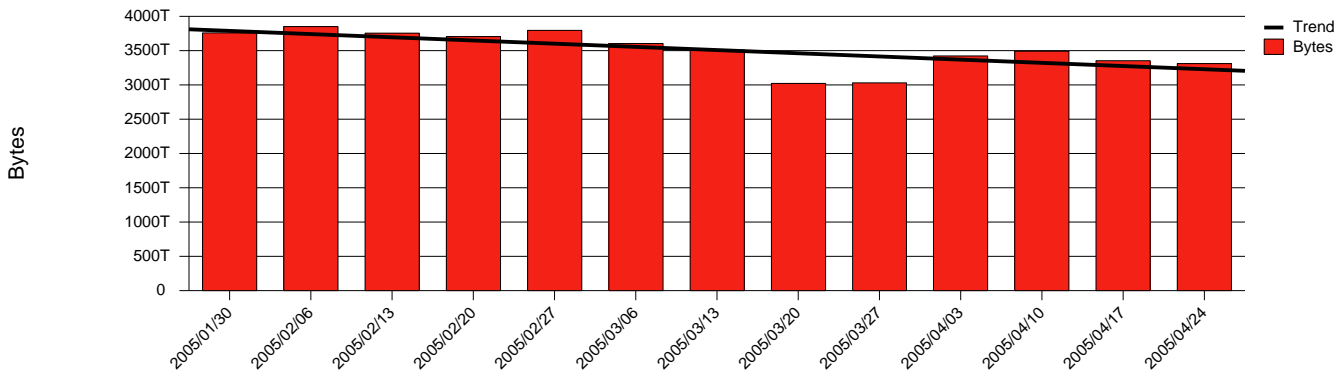


LAN/WAN

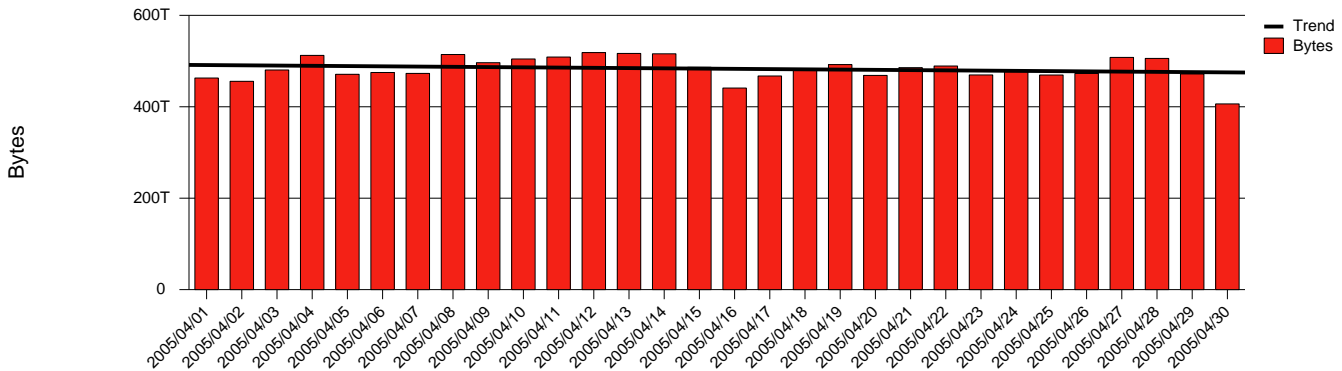
Total Network Volume by Month



Total Network Volume by Week



Total Network Volume by Day



Situations to Watch

Rank	Element Name	Variable	Threshold	Monthly Average		Days to (from)
			Value	Actual	Predicted	Threshold
1	SUNET-SE-stockholm1.sunet.se-POS14/0(In)	Errors (% Frames)	5.000	0.000	81.971	(1135)
2	lulea2-SRP-irf(In)	Errors (% Frames)	5.000	0.017	48.436	(517)
3	trollhattan2-skovde1(In)	Errors (% Frames)	5.000	52.985	12.672	(177)
4	X-DIV-UUN2(Out)	Volume (Bandwidth %)	80.000	0.000	32.708	456
5	X-DIV-UUN1(Out)	Volume (Bandwidth %)	80.000	17.238	23.151	790
6	X-TEL-STH3(Out)	Volume (Bandwidth %)	80.000	14.849	25.795	855
7	X-NEN-MMA4(Out)	Volume (Bandwidth %)	80.000	15.797	20.644	989
8	sundsvall2-SRP_DGIX(Out)	Volume (Bandwidth %)	80.000	15.833	20.331	Increasing
9	X-NEN-STH3(In)	Volume (Bandwidth %)	80.000	14.256	18.500	Increasing
10	X-NOR-UME4(Out)	Volume (Bandwidth %)	80.000	14.335	14.981	Increasing

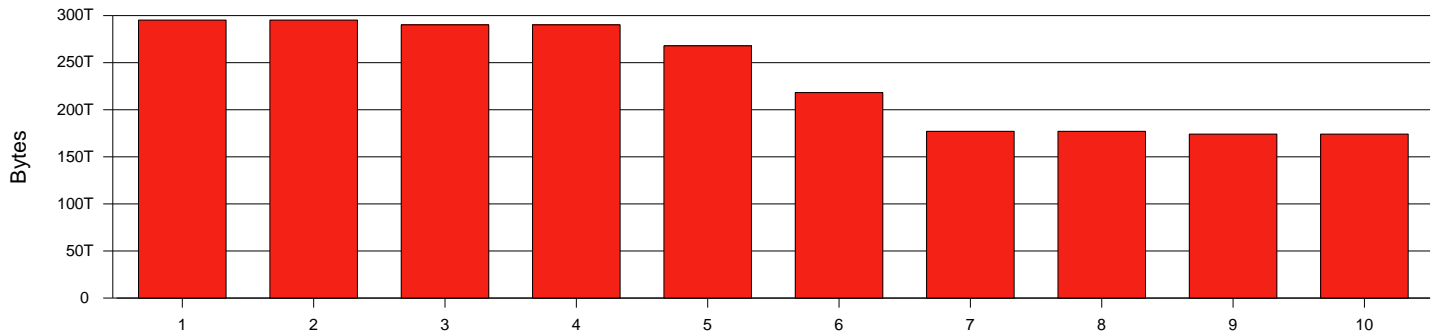
Monthly Health Report

Report for 2005/04/30, Subject: Giga-Sunet



LAN/WAN

Volume Leaders



Volume Leaders in Bytes

Rank	Prior Rank	Element Name	Speed	Volume		Bandwidth		Health Index	
				Bytes	vs Baseline	Avg	Peak	Avg	Peak
1	1	stockholm1-linkoping2(Out)	10.0 Gbs	295.2 T	91.6%	9.1%	16.1%	0.0	0.0
2	2	stockholm2-kalmar2(In)	10.0 Gbs	295.2 T	74.3%	9.1%	16.1%	0.0	0.0
3	5	uppsala2-stockholm2(Out)	10.0 Gbs	290.2 T	26.6%	9.0%	18.3%	0.0	0.0
4	4	X-NDN-STH2(In)	10.0 Gbs	290.2 T	52.3%	9.0%	18.3%	0.0	0.0
5	3	vasteras1-stockholm1(Out)	10.0 Gbs	267.9 T	-1.0%	8.3%	16.1%	0.0	0.0
6	6	stockholm2-SRP_Sunet(In)	10.0 Gbs	218.2 T	85.7%	6.7%	11.7%	0.0	0.0
7	8	stockholm1-linkoping2(In)	10.0 Gbs	177.1 T	41.8%	5.5%	14.3%	0.0	0.0
8	9	stockholm2-kalmar2(Out)	10.0 Gbs	177.1 T	77.2%	5.5%	14.4%	0.0	0.0
9	18	uppsala1-borlange2(In)	10.0 Gbs	174.1 T	20.9%	5.4%	14.1%	0.0	0.0
10	17	borlange2-uppsala1(Out)	10.0 Gbs	174.1 T	20.9%	5.4%	14.1%	0.0	0.0

Health Index Leaders

Rank	Prior Rank	Element Name	Contributor	Health Index		Bandwidth	
				Avg	Peak	Avg	Peak
1	1	malmo4-SRP1-1(Out)	Nonunicast Rate	2.0	8.0	7.5%	27.0%
2	2	malmo4-SRP1-2(In)	Nonunicast Rate	2.0	8.0	6.3%	13.7%
3	515	trollhattan2-skovde1(In)	Errors	0.2	8.0	0.1%	0.9%
4	104	X-NEN-GOT4(Out)	Utilization	0.0	4.0	19.4%	86.0%
5	311	X-NEN-MMA4(In)	Utilization	0.0	4.0	16.7%	81.6%
6	315	mdh1-SRP(In)	Errors	0.0	8.0	4.3%	10.5%
7	333	orebro2-SRP(In)	Errors	0.0	8.0	0.0%	0.7%
8	270	lulea1-SRP-irf(In)	Errors	0.0	8.0	0.3%	2.6%
9	469	stockholm4-srp2(In)	Errors	0.0	8.0	0.5%	2.8%
10	8	irf2-SRP(In)	Errors	0.0	8.0	0.0%	0.0%

Volume Change Leaders

Rank	Prior Rank	Element Name	Volume	
			Bytes	vs Baseline
1	8	bth2-SRP(In)	15.8 T	1.2 K%
2	94	oru2-SRP(In)	26.8 T	668.1%
3	5	stockholm2-SRP(Out)	5.2 M	355.0%
4	7	goteborg1-SRP(Out)	15.8 T	333.0%
5	106	uppsala1-SRP(Out)	6.4 M	313.4%
6	1	umu2-SRP(Out)	947.6 G	258.3%
7	39	X-NEN-GOT4(Out)	62.9 T	235.6%
8	6	goteborg1-SRP(In)	28.3 T	213.5%
9	45	sundsvall1-SRP(In)	13.2 T	203.0%
10	108	su1-SRP(In)	1.1 T	201.0%

Health Index Change Leaders

Rank	Prior Rank	Element Name	Health Index		
			Avg	Prior	Change
1	1	uppsala2-stockholm2(In)	0.00	0.52	-0.52
2	516	trollhattan2-skovde1(In)	0.15	0.00	0.15
3	114	X-NEN-GOT4(Out)	0.01	0.00	0.01
4	320	X-NEN-MMA4(In)	0.01	0.00	0.01
5	8	lulea2-SRP-irf(In)	0.00	0.01	-0.01
6	324	mdh1-SRP(In)	0.01	0.00	0.01
7	9	stockholm4-srp4(In)	0.00	0.00	-0.00
8	341	orebro2-SRP(In)	0.00	0.00	0.00
9	10	uu2-SRP(In)	0.00	0.00	-0.00
10	3	malmo4-SRP1-1(Out)	2.00	2.00	0.00