

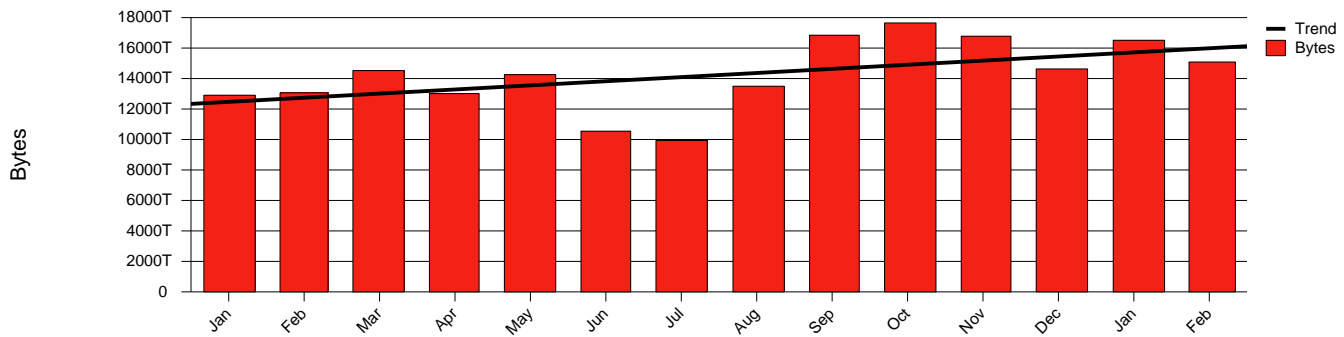
# GigaSunet - Monthly Health Report

Report for 2005/02/28

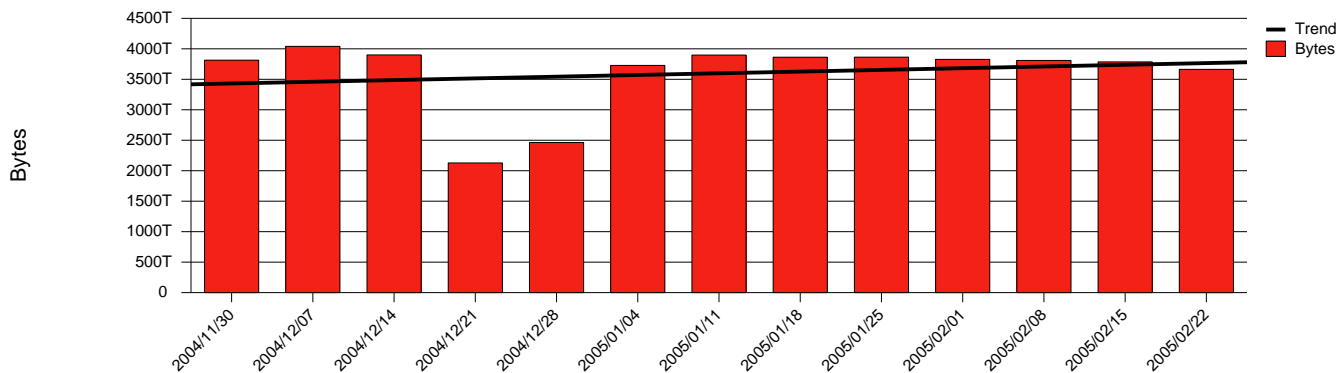


LAN/WAN

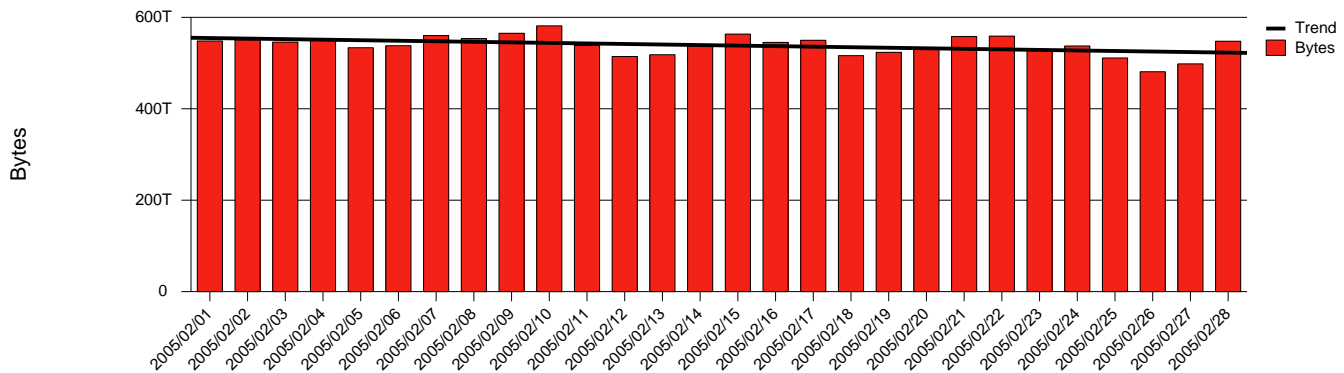
Total Network Volume by Month



Total Network Volume by Week



Total Network Volume by Day



Situations to Watch

Rank	Element Name	Variable	Threshold	Monthly Average		Days to (from)
			Value	Actual	Predicted	Threshold
1	SUNET-SE-stockholm1.sunet.se-POS14/0(In)	Errors (% Frames)	5.000	0.000	134.373	(396)
2	Iulea2-SRP-irf(In)	Errors (% Frames)	5.000	0.000	71.244	(346)
3	X-DIV-UUN2(Out)	Volume (Bandwidth %)	80.000	35.803	27.505	486
4	X-TEL-STH3(Out)	Volume (Bandwidth %)	80.000	23.854	28.292	560
5	X-DIV-UUN1(Out)	Volume (Bandwidth %)	80.000	27.746	22.458	650
6	hik2-SRP(In)	Errors (% Frames)	5.000	0.000	1.377	932
7	X-NEN-STH3(In)	Volume (Bandwidth %)	80.000	18.254	18.949	1077
8	SUNET-SE-stockholm4.sunet.se-SRP2/0-RING-SIDE-13.2(In)	Nonunicast Rate	100.000	54.201	31.811	1125
9	sthlm4SRP-sthlm3SRP(Out)	Nonunicast Rate	100.000	54.202	31.812	1126
10	sundsvall2-SRP_DGIX(Out)	Volume (Bandwidth %)	80.000	16.751	19.670	1178

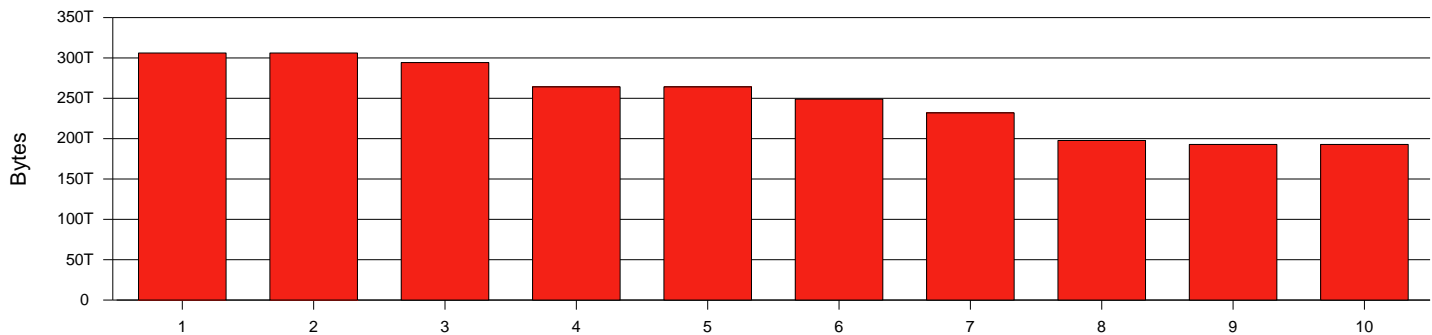
# GigaSunet - Monthly Health Report

Report for 2005/02/28



LAN/WAN

## Volume Leaders



## Volume Leaders in Bytes

Rank	Prior Rank	Element Name	Speed	Volume		Bandwidth		Health Index	
				Bytes	vs Baseline	Avg	Peak	Avg	Peak
1	2	stockholm1-linkoping2(Out)	10.0 Gbs	306.1 T	151.3%	10.1%	21.4%	0.0	0.0
2	22	stockholm2-kalmar2(In)	10.0 Gbs	306.1 T	110.5%	10.1%	21.4%	0.0	0.0
3	3	vasteras1-stockholm1(Out)	10.0 Gbs	294.3 T	9.6%	9.7%	23.0%	0.0	0.0
4	11	X-NDN-STH2(In)	10.0 Gbs	264.2 T	52.7%	8.7%	13.8%	0.0	4.0
5	4	uppsala2-stockholm2(Out)	10.0 Gbs	264.2 T	22.3%	8.7%	13.8%	0.0	0.0
6	99	stockholm2-SRP_Sunet(In)	10.0 Gbs	249.0 T	137.8%	8.2%	13.9%	0.0	0.0
7	91	stockholm2-SRP_Sunet(Out)	10.0 Gbs	232.0 T	147.4%	7.7%	14.3%	0.0	0.0
8	8	stockholm3--stockholm1(In)	10.0 Gbs	197.7 T	49.2%	6.5%	15.1%	0.0	0.0
9	10	X-NDN-STH1(In)	10.0 Gbs	192.8 T	304.1%	6.4%	18.0%	0.0	8.0
10	9	jonkoping1-stockholm1(Out)	10.0 Gbs	192.8 T	-15.8%	6.4%	18.1%	0.0	0.0

## Health Index Leaders

Rank	Prior Rank	Element Name	Contributor	Health Index		Bandwidth	
				Avg	Peak	Avg	Peak
1	3	malmo4-SRP1-1(Out)	Nonunicast Rate	2.0	2.0	8.7%	16.2%
2	4	malmo4-SRP1-2(In)	Nonunicast Rate	2.0	2.0	8.9%	19.5%
3	13	uppsala2-stockholm2(In)	Errors	0.2	8.0	4.6%	8.4%
4	20	SUNET-SE-stockholm3.sunet.se-SRP2/0-RING-SIDE-19.1(In)	Nonunicast Rate	0.0	8.0	1.5%	7.2%
5	19	SUNET-SE-stockholm3.sunet.se-SRP2/0-RING-SIDE-19.2(Out)	Nonunicast Rate	0.0	8.0	0.0%	0.6%
6	32	boras2-SRP2(In)	Errors	0.0	8.0	0.0%	1.8%
7	163	irf2-SRP(In)	Errors	0.0	8.0	0.0%	0.0%
8	139	hig2-SRP(In)	Errors	0.0	8.0	0.0%	4.9%
9	471	SUNET-SE-stockholm4.sunet.se-SRP2/0-RING-SIDE-13.2(In)	Nonunicast Rate	0.0	2.0	0.0%	0.6%
10	470	sthlm4SRP-sthlm3SRP(Out)	Nonunicast Rate	0.0	2.0	0.6%	4.5%

## Volume Change Leaders

Rank	Prior Rank	Element Name	Volume	
			Bytes	vs Baseline
1	1	stockholm2-SRP(Out)	4.9 M	1.1 K%
2	394	jonkoping2-SRP(In)	474.9 G	712.6%
3	212	X-DIV-UUN2(Out)	10.4 G	605.1%
4	2	su1-SRP(In)	1.4 T	390.0%
5	3	hb2-SRP(Out)	10.2 T	383.9%
6	4	hkr2-SRP(Out)	9.6 T	377.7%
7	5	hkr2-SRP(In)	9.7 T	353.7%
8	105	X-DIV-UUN2(In)	1.6 G	325.0%
9	202	du2-SRP(Out)	5.2 G	322.4%
10	12	goteborg1-SRP(In)	16.2 T	316.1%

## Health Index Change Leaders

Rank	Prior Rank	Element Name	Health Index		
			Avg	Prior	Change
1	1	SUNET-SE-stockholm2.sunet.se-POS0/0(In)	0.00	4.32	-4.32
2	2	SUNET-SE-stockholm2.sunet.se-POS0/0(Out)	0.00	3.58	-3.58
3	24	uppsala2-stockholm2(In)	0.16	0.00	0.16
4	3	malmo4-SRP1-1(Out)	1.96	2.00	-0.04
5	4	malmo4-SRP1-2(In)	1.96	2.00	-0.04
6	33	SUNET-SE-stockholm3.sunet.se-SRP2/0-RING-S	0.03	0.00	0.03
7	32	SUNET-SE-stockholm3.sunet.se-SRP2/0-RING-S	0.03	0.00	0.03
8	10	X-NDN-STH1(In)	0.00	0.02	-0.02
9	11	goteborg2-boras2(In)	0.00	0.01	-0.01
10	14	X-NEN-MMA4(Out)	0.00	0.01	-0.01