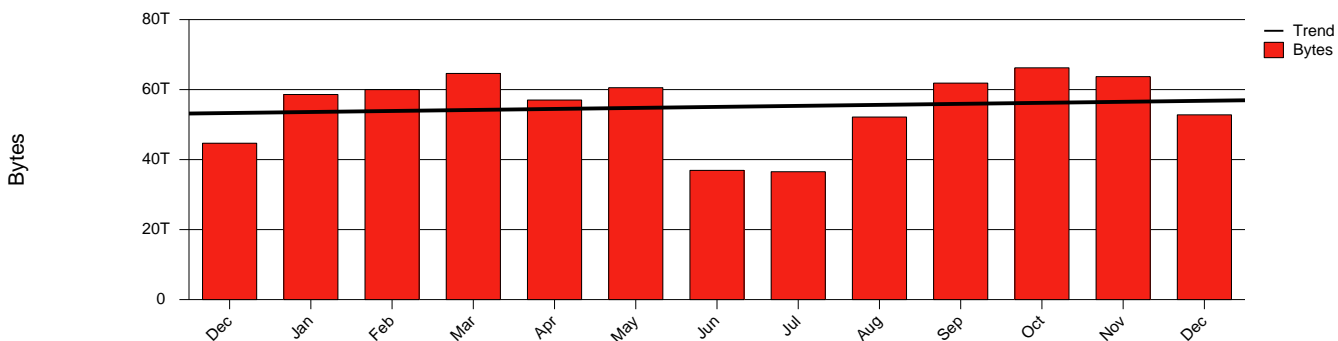


# Sundsvall - MH - Monthly Health Report

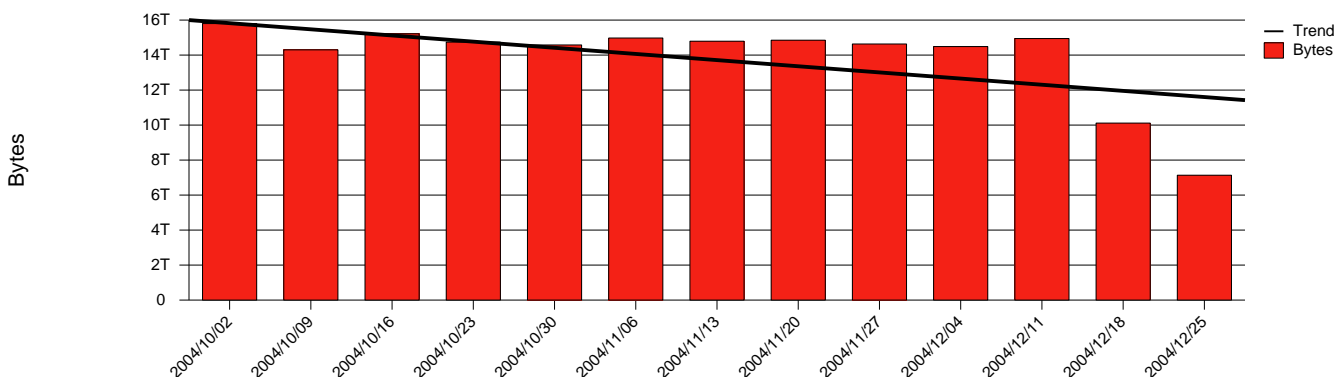
LAN/WAN

Report for 2004/12/31

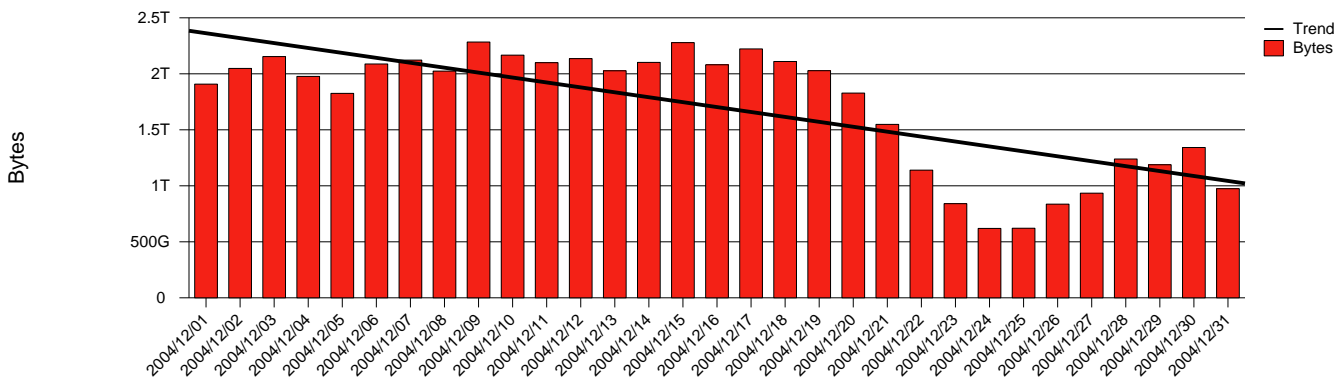
Total Network Volume by Month



Total Network Volume by Week



Total Network Volume by Day



Situations to Watch

| Rank | Element Name | Variable             | Threshold Value | Monthly Average |           | Days to (from) Threshold |
|------|--------------|----------------------|-----------------|-----------------|-----------|--------------------------|
|      |              |                      |                 | Actual          | Predicted |                          |
| 1    | mh1-SRP(In)  | Volume (Bandwidth %) | 80.000          | 0.624           | 1.581     | Increasing               |
| 2    | mh2-SRP(Out) | Volume (Bandwidth %) | 80.000          | 2.717           | 1.033     | Increasing               |
| 3    | mh2-SRP(In)  | Errors (% Frames)    | 5.000           | 0.000           | 0.002     | Increasing               |
| 4    | mh1-SRP(In)  | Errors (% Frames)    | 5.000           | 0.000           | 0.000     | Increasing               |
| 5    | mh1-SRP(Out) | Volume (Bandwidth %) | 80.000          | 0.907           | 2.992     | Decreasing               |
| 6    | mh2-SRP(In)  | Volume (Bandwidth %) | 80.000          | 2.094           | 1.287     | Decreasing               |