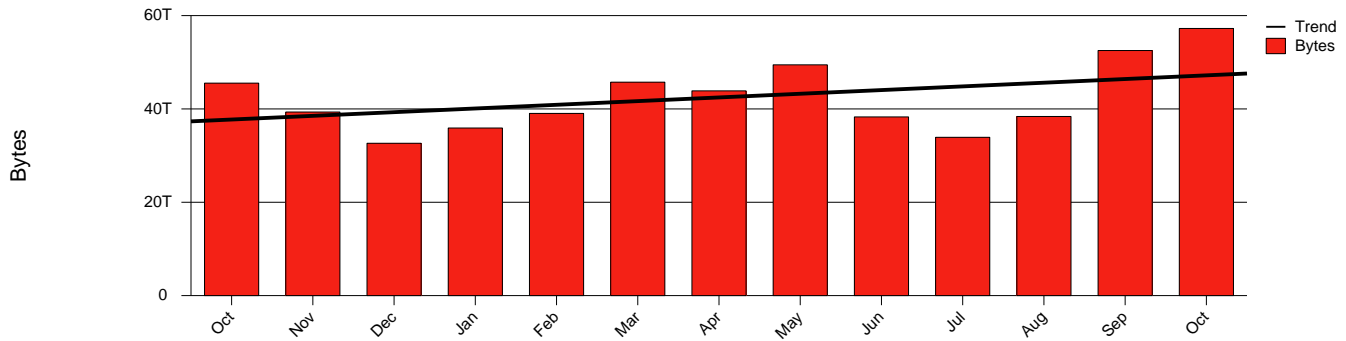


Lund, LU - Monthly Health Report

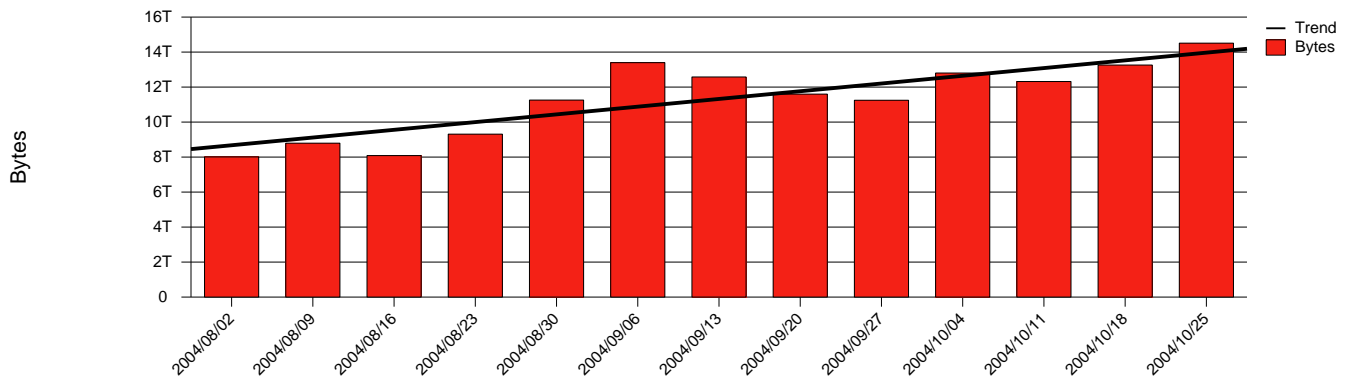
LAN/WAN

Report for 2004/10/31

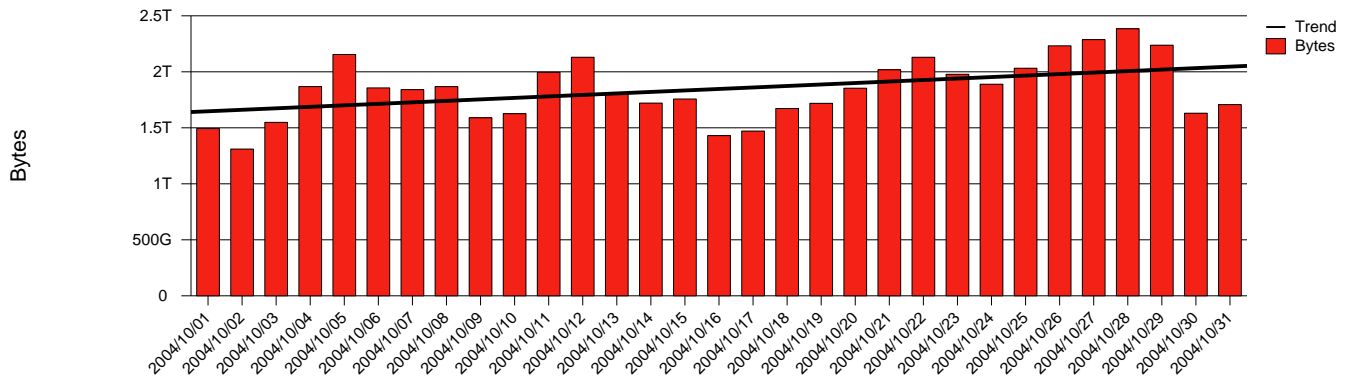
Total Network Volume by Month



Total Network Volume by Week



Total Network Volume by Day



Situations to Watch

Rank	Element Name	Variable	Threshold Value	Monthly Average		Days to (from) Threshold
				Actual	Predicted	
1	lu1-SRP(In)	Nonunicast Rate	100.000	66.840	104.013	(872)
2	lu2-SRP(Out)	Nonunicast Rate	100.000	12.545	17.414	Increasing
3	lu1-SRP(Out)	Volume (Bandwidth %)	80.000	1.637	1.671	Increasing
4	lu1-SRP(In)	Volume (Bandwidth %)	80.000	2.080	1.700	Increasing
5	lu2-SRP(Out)	Volume (Bandwidth %)	80.000	1.760	1.281	Increasing
6	lu2-SRP(In)	Volume (Bandwidth %)	80.000	1.454	1.120	Increasing
7	lu1-SRP(In)	Errors (% Frames)	5.000	0.001	0.004	Increasing
8	lu2-SRP(In)	Errors (% Frames)	5.000	0.000	0.000	Increasing
9	lu2-SRP(In)	Discards (% Frames)	10.000	0.000	0.000	Increasing
10	lu1-SRP(In)	Discards (% Frames)	10.000	0.000	0.000	Increasing