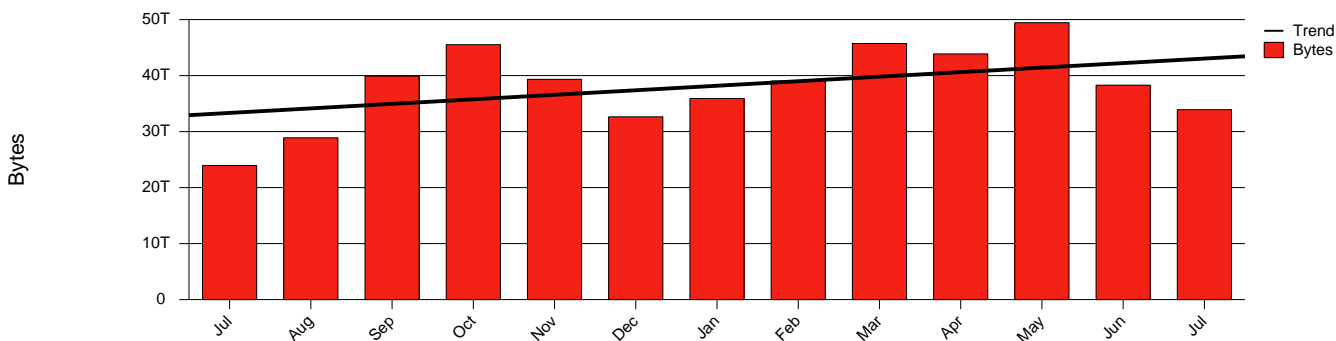


Lund, LU - Monthly Health Report

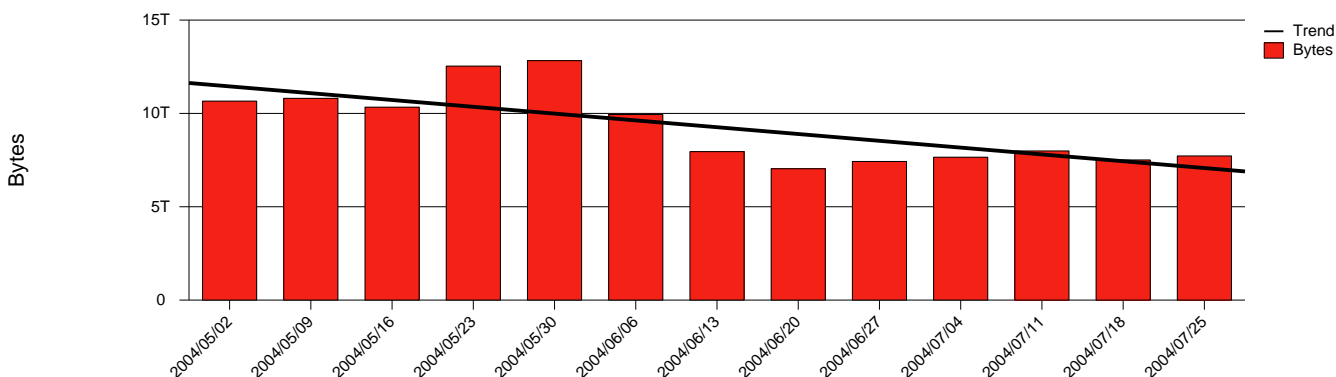
LAN/WAN

Report for 2004/07/31

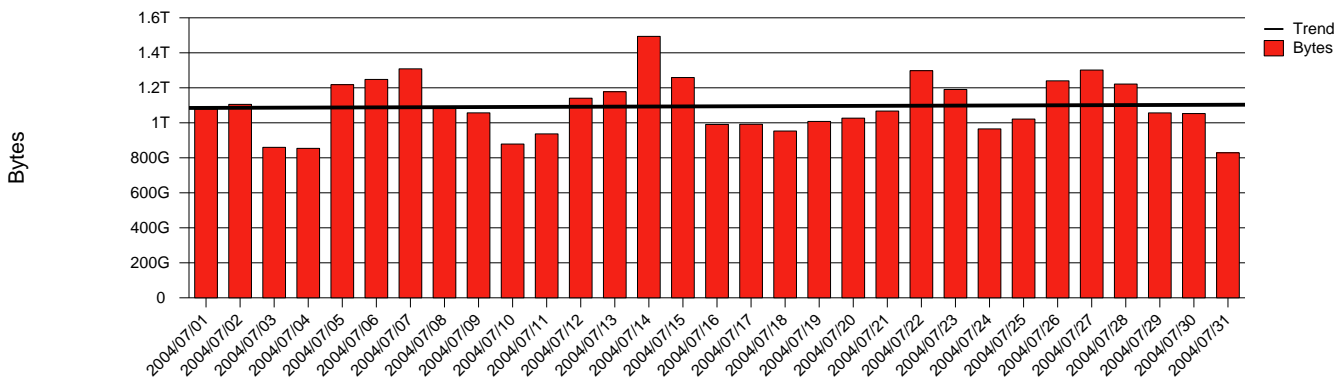
Total Network Volume by Month



Total Network Volume by Week



Total Network Volume by Day



Situations to Watch

Rank	Element Name	Variable	Threshold Value	Monthly Average		Days to (from) Threshold
				Actual	Predicted	
1	lu1-SRP(In)	Nonunicast Rate	100.000	86.707	159.739	(164)
2	lu2-SRP(In)	Nonunicast Rate	100.000	73.756	137.812	(121)
3	lu2-SRP(Out)	Nonunicast Rate	100.000	13.191	22.593	Increasing
4	lu1-SRP(Out)	Volume (Bandwidth %)	80.000	0.911	1.656	Increasing
5	lu1-SRP(In)	Volume (Bandwidth %)	80.000	0.943	1.670	Increasing
6	lu2-SRP(In)	Errors (% Frames)	5.000	0.001	0.001	Increasing
7	lu1-SRP(Out)	Nonunicast Rate	100.000	0.241	0.666	Increasing
8	lu2-SRP(In)	Volume (Bandwidth %)	80.000	0.850	1.006	Increasing
9	lu2-SRP(In)	Discards (% Frames)	10.000	0.000	0.000	Decreasing
10	lu2-SRP(Out)	Volume (Bandwidth %)	80.000	1.370	1.059	Decreasing