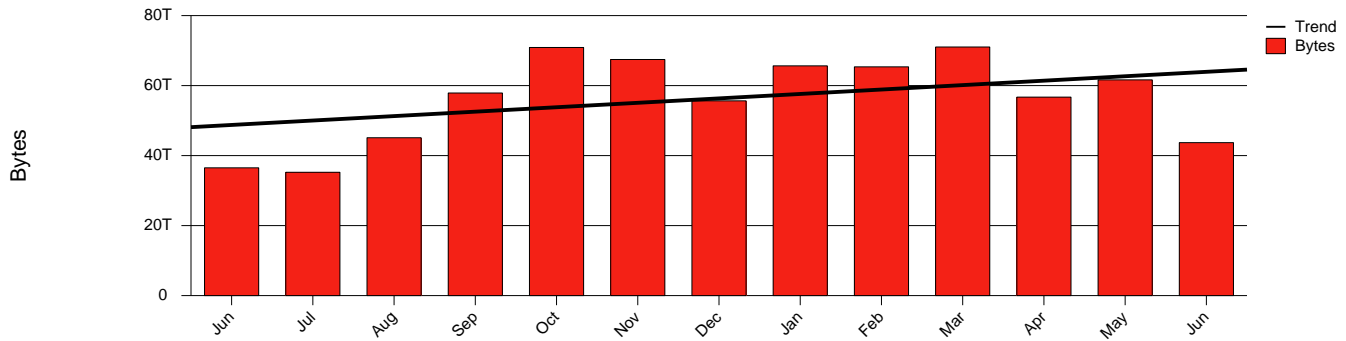


# Halmstad, HH - Monthly Health Report

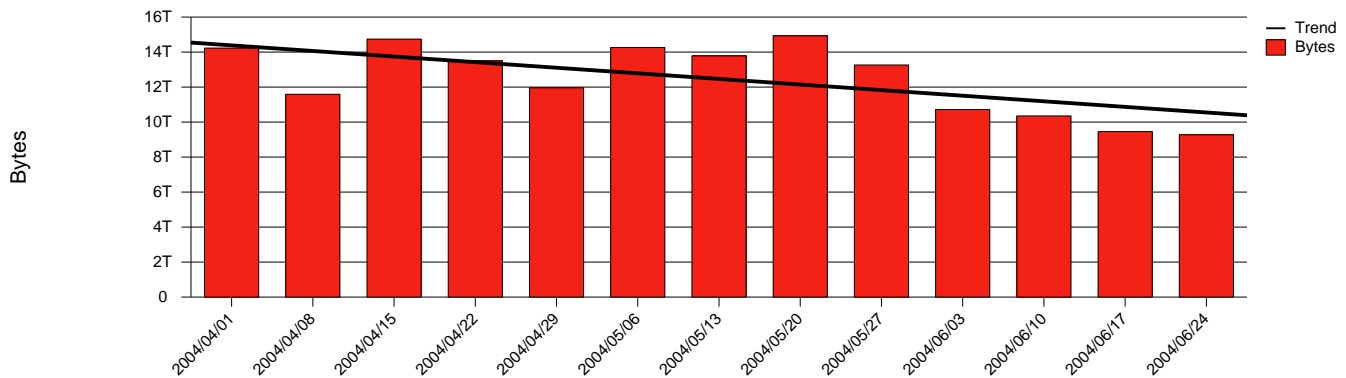
LAN/WAN

Report for 2004/06/30

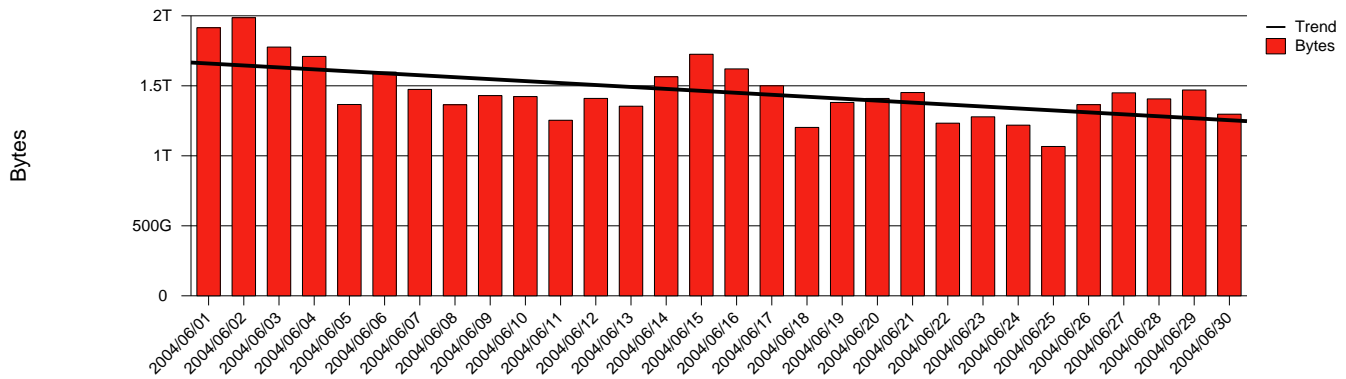
Total Network Volume by Month



Total Network Volume by Week



Total Network Volume by Day



Situations to Watch

| Rank | Element Name | Variable             | Threshold | Monthly Average |           | Days to (from) |
|------|--------------|----------------------|-----------|-----------------|-----------|----------------|
|      |              |                      | Value     | Actual          | Predicted | Threshold      |
| 1    | hh1-SRP(Out) | Volume (Bandwidth %) | 80.000    | 3.141           | 4.627     | Increasing     |
| 2    | hh1-SRP(In)  | Volume (Bandwidth %) | 80.000    | 2.222           | 2.977     | Increasing     |
| 3    | hh2-SRP(In)  | Volume (Bandwidth %) | 80.000    | 0.062           | 0.263     | Increasing     |
| 4    | hh1-SRP(In)  | Errors (% Frames)    | 5.000     | 0.000           | 0.000     | Increasing     |
| 5    | hh2-SRP(Out) | Volume (Bandwidth %) | 80.000    | 0.000           | 0.000     | Increasing     |
| 6    | hh2-SRP(In)  | Errors (% Frames)    | 5.000     | 0.000           | 0.000     | Decreasing     |