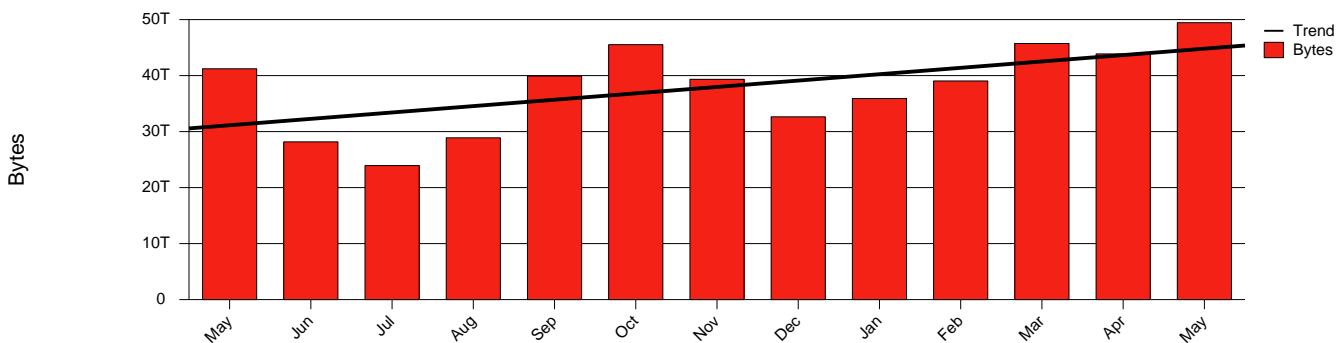


Lund, LU - Monthly Health Report

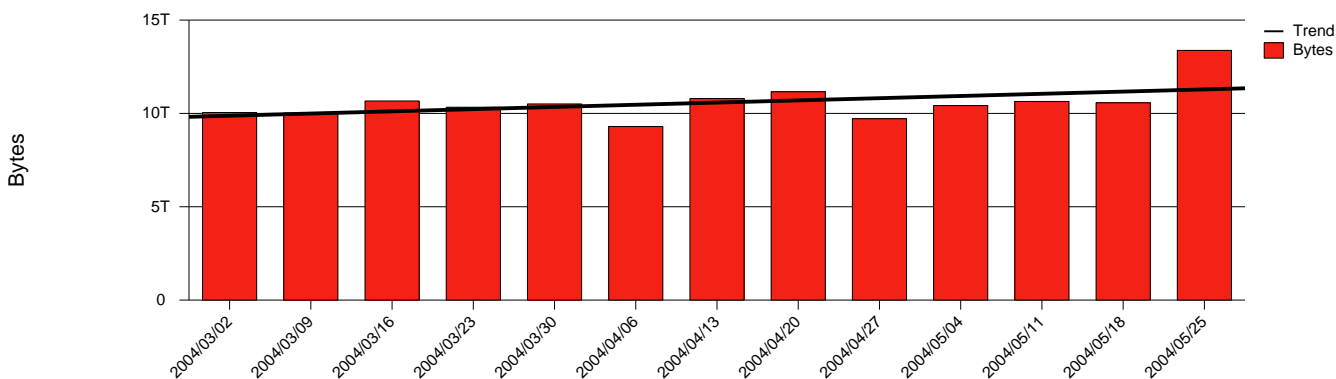
LAN/WAN

Report for 2004/05/31

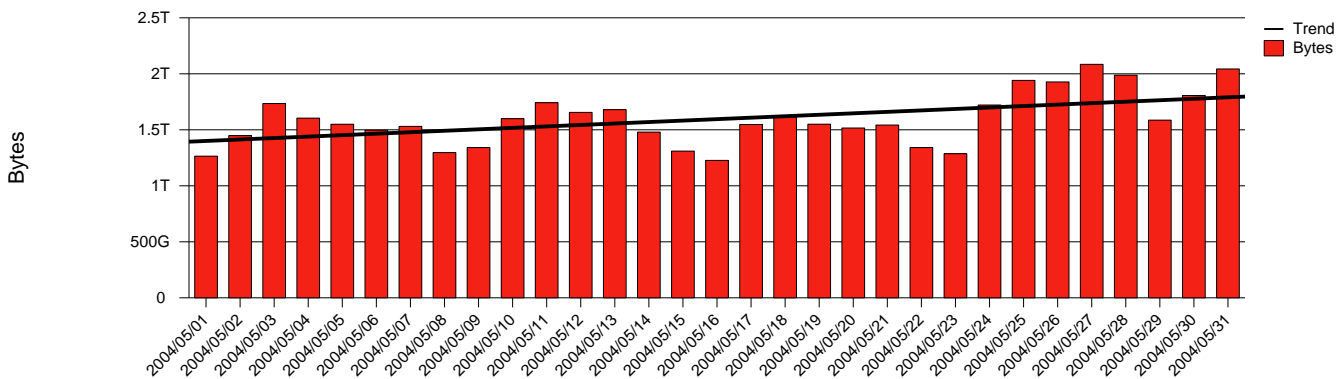
Total Network Volume by Month



Total Network Volume by Week



Total Network Volume by Day



Situations to Watch

| Rank | Element Name | Variable | Threshold Value | Monthly Average | | Days to (from) Threshold |
|------|--------------|----------------------|-----------------|-----------------|-----------|--------------------------|
| | | | | Actual | Predicted | |
| 1 | lu1-SRP(In) | Nonunicast Rate | 100.000 | 82.672 | 172.629 | (145) |
| 2 | lu2-SRP(In) | Nonunicast Rate | 100.000 | 68.874 | 149.442 | (115) |
| 3 | lu2-SRP(Out) | Nonunicast Rate | 100.000 | 14.161 | 23.985 | 1066 |
| 4 | lu1-SRP(In) | Volume (Bandwidth %) | 80.000 | 1.839 | 1.888 | Increasing |
| 5 | lu1-SRP(Out) | Volume (Bandwidth %) | 80.000 | 2.138 | 1.588 | Increasing |
| 6 | lu1-SRP(Out) | Nonunicast Rate | 100.000 | 0.363 | 1.015 | Increasing |
| 7 | lu1-SRP(In) | Errors (% Frames) | 5.000 | 0.000 | 0.004 | Increasing |
| 8 | lu2-SRP(In) | Volume (Bandwidth %) | 80.000 | 0.978 | 0.874 | Decreasing |
| 9 | lu2-SRP(In) | Discards (% Frames) | 10.000 | 0.000 | 0.000 | Decreasing |
| 10 | lu2-SRP(In) | Errors (% Frames) | 5.000 | 0.000 | 0.000 | Decreasing |