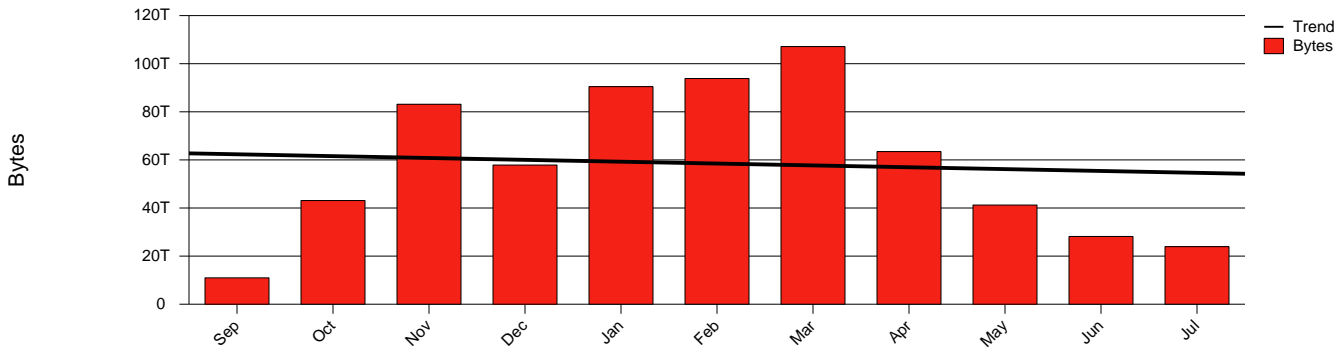


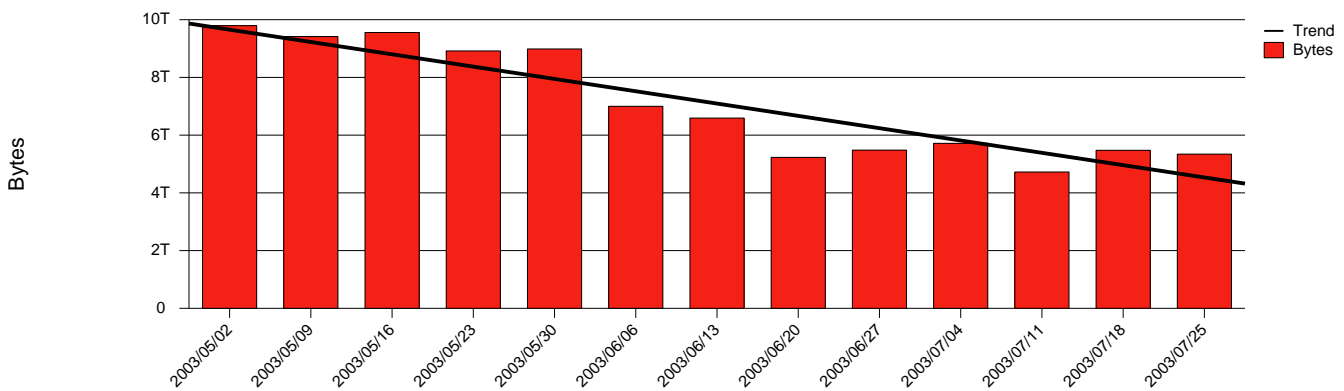
Lund LU - Monthly Health Report

Report for 2003/07/31

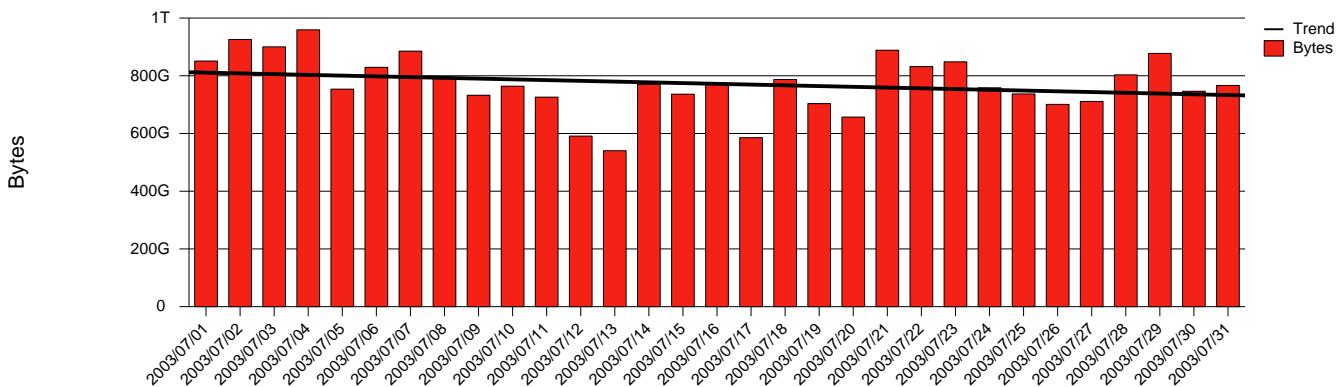
Total Network Volume by Month



Total Network Volume by Week



Total Network Volume by Day



Situations to Watch

| Rank | Element Name | Variable | Threshold | Monthly Average | | Days to (from) Threshold |
|------|--------------|----------------------|-----------|-----------------|-----------|--------------------------|
| | | | Value | Actual | Predicted | |
| 1 | lu1-SRP(Out) | Volume (Bandwidth %) | 80.000 | 0.704 | 1.025 | Increasing |
| 2 | lu1-SRP(In) | Errors (% Frames) | 5.000 | 0.000 | 0.007 | Increasing |
| 3 | lu1-SRP(In) | Volume (Bandwidth %) | 80.000 | 0.682 | 0.880 | Increasing |
| 4 | lu2-SRP(In) | Errors (% Frames) | 5.000 | 0.000 | 0.000 | Increasing |
| 5 | lu1-SRP(In) | Discards (% Frames) | 10.000 | 0.000 | 0.000 | Increasing |
| 6 | lu2-SRP(In) | Discards (% Frames) | 10.000 | 0.000 | 0.000 | Increasing |
| 7 | lu2-SRP(Out) | Discards (% Frames) | 10.000 | 0.000 | 0.000 | Increasing |
| 8 | lu2-SRP(In) | Volume (Bandwidth %) | 80.000 | 0.733 | 1.532 | Decreasing |
| 9 | lu2-SRP(Out) | Volume (Bandwidth %) | 80.000 | 0.763 | 1.470 | Decreasing |