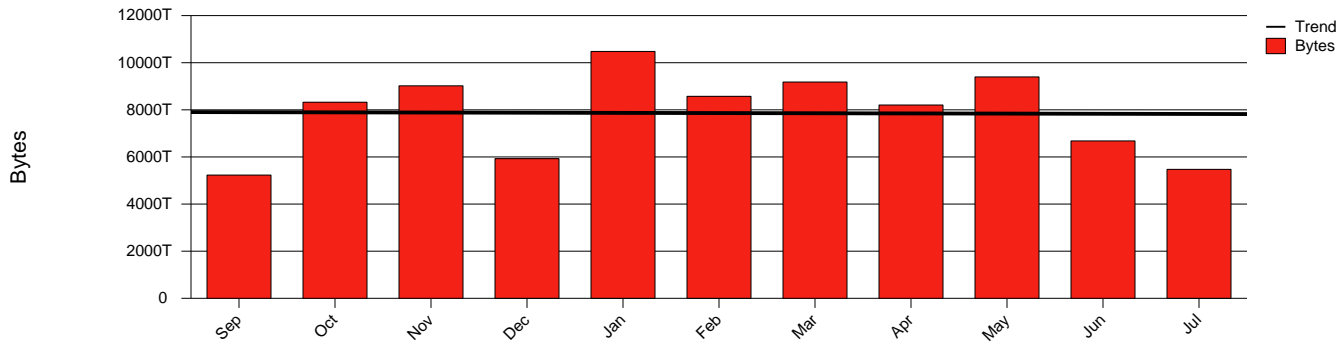


GigaSunet - Monthly Health Report

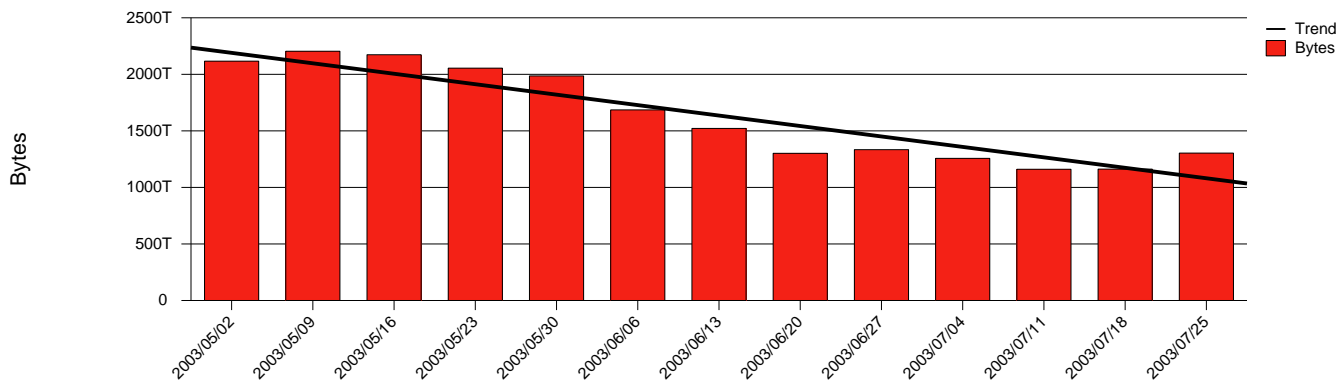
LAN/WAN

Report for 2003/07/31

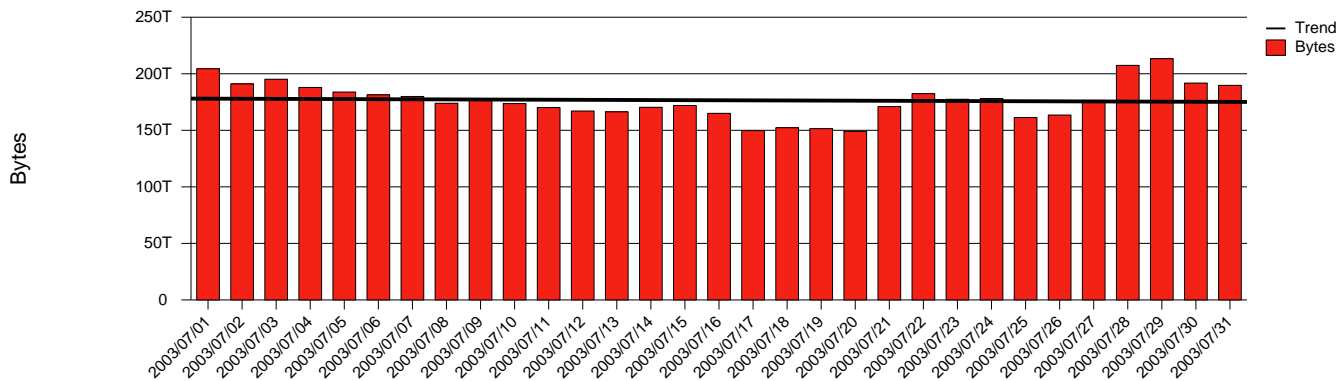
Total Network Volume by Month



Total Network Volume by Week



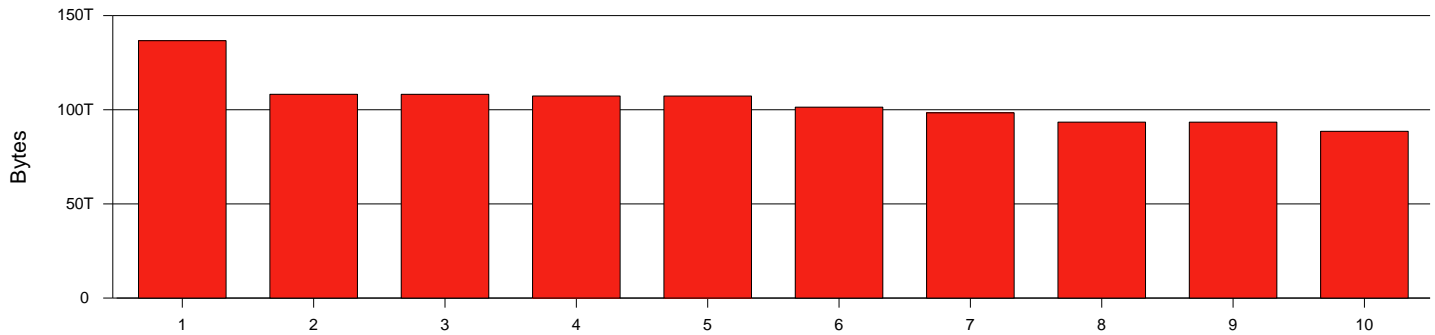
Total Network Volume by Day



Situations to Watch

Rank	Element Name	Variable	Threshold	Monthly Average		Days to (from)
			Value	Actual	Predicted	Threshold
1	uppsala1-borlange2(In)	Errors (% Frames)	5.000	0.000	1.153 K	(456)
2	borlange2-uppsala1(In)	Errors (% Frames)	5.000	0.000	139.720	(228)
3	lulea1-SRP-irf(In)	Errors (% Frames)	5.000	972.597	322.843	(228)
4	liu1-SRP(In)	Errors (% Frames)	5.000	186.415	113.332	(189)
5	gavle1-lulea1(In)	Errors (% Frames)	5.000	91.000	29.090	(175)
6	goteborg1-goteborgsdptgix(In)	Volume (Bandwidth %)	80.000	20.141	27.098	513
7	malmo2-malmodptgix(In)	Volume (Bandwidth %)	80.000	6.677	8.574	Increasing
8	sundsvall1-SRP_DGIX(In)	Volume (Bandwidth %)	80.000	4.623	5.903	Increasing
9	malmo1-SRP-malmodptgix(In)	Volume (Bandwidth %)	80.000	1.756	8.286	Increasing
10	gu2-SRP(In)	Errors (% Frames)	5.000	0.101	0.234	Increasing

Volume Leaders



Volume Leaders in Bytes

Prior			Volume			Bandwidth		Health Index	
Rank	Rank	Element Name	Speed	Bytes	vs Baseline	Avg	Peak	Avg	Peak
1	3	stockholm1-SRP(In)	2.5 Gbs	136.7 T	-15.6%	16.4%	53.6%	0.0	0.0
2	2	stockholm1-vasteras1(In)	10.0 Gbs	108.2 T	-40.1%	3.2%	11.7%	0.0	8.0
3	1	vasteras1-stockholm1(Out)	10.0 Gbs	108.2 T	-39.8%	3.2%	11.8%	0.0	0.0
4	4	stockholm1-jonkoping1(In)	10.0 Gbs	107.3 T	-3.9%	3.2%	5.7%	0.0	0.0
5	5	jonkoping1-stockholm1(Out)	10.0 Gbs	107.3 T	-4.1%	3.2%	5.7%	0.0	0.0
6	15	stkpr3_SRP-Sunet(Out)	2.5 Gbs	101.4 T	15.1%	12.2%	26.3%	0.0	0.0
7	6	stockholm1-SRP(Out)	2.5 Gbs	98.4 T	-28.7%	11.8%	48.6%	0.0	0.0
8	17	SUNET-SE-stkpr3.sunet.se-POS8(In)	2.4 Gbs	93.4 T	12.9%	11.6%	25.9%	0.0	8.0
9	16	old-stkpr3_UU-FTP-1(In)	2.4 Gbs	93.4 T	51.4%	11.6%	25.8%	0.0	8.0
10	9	boras2-jonkoping1(Out)	10.0 Gbs	88.6 T	1.2%	2.6%	5.0%	0.0	0.0

Health Index Leaders

Prior			Health Index		Bandwidth		
Rank	Rank	Element Name	Contributor	Avg	Peak	Avg	Peak
1	1	liu1-SRP(In)	Errors	5.1	8.0	0.0%	1.9%
2	4	mah2-SRP(In)	Errors	0.6	8.0	0.0%	0.7%
3	2	ki1-SRP(In)	Errors	0.5	8.0	0.3%	4.0%
4	314	sh1-SRP(In)	Errors	0.1	8.0	0.0%	0.0%
5	250	lulea1-SRP-irf(In)	Errors	0.0	8.0	0.1%	1.5%
6	298	orebro2-SRP(In)	Errors	0.0	8.0	0.0%	0.6%
7	152	irf2-SRP(In)	Errors	0.0	8.0	0.0%	0.3%
8	150	irf1-SRP(In)	Errors	0.0	8.0	0.0%	0.3%
9	394	stockholm4-srp4(In)	Errors	0.0	8.0	0.2%	1.3%
10	410	sundsvall2-SRP(In)	Errors	0.0	2.0	1.3%	4.3%

Volume Change Leaders

Prior			Volume	
Rank	Rank	Element Name	Bytes	vs Baseline
1	157	jonkoping2-SRP(In)	5.9 T	976.6%
2	281	mh2-SRP(In)	26.0 G	510.4%
3	391	stockholm4-srp2(In)	4.0 T	220.0%
4	392	stockholm4-srp2(Out)	4.5 T	217.8%
5	101	halmstad2-SRP(In)	21.0 T	142.2%
6	41	bth2-SRP(In)	32.4 G	138.0%
7	382	stockholm3-SRP2(Out)	3.6 T	136.7%
8	417	trollhattan1-SRP(In)	567.6 G	128.4%
9	365	stockholm2-Nordunet1(In)	717.7 G	101.4%
10	231	ltu2-SRP(In)	562.5 G	101.3%

Health Index Change Leaders

Prior			Health Index		
Rank	Rank	Element Name	Avg	Prior	Change
1	7	mah2-SRP(In)	0.62	0.23	0.39
2	4	borlange2-uppsala1(In)	0.00	0.36	-0.35
3	1	liu1-SRP(In)	5.12	4.84	0.29
4	6	sh1-SRP(In)	0.10	0.00	0.10
5	5	ki1-SRP(In)	0.52	0.61	-0.09
6	9	su2-SRP(In)	0.00	0.01	-0.01
7	261	lulea1-SRP-irf(In)	0.01	0.00	0.01
8	306	orebro2-SRP(In)	0.01	0.00	0.01
9	166	irf2-SRP(In)	0.01	0.00	0.01
10	164	irf1-SRP(In)	0.01	0.00	0.01