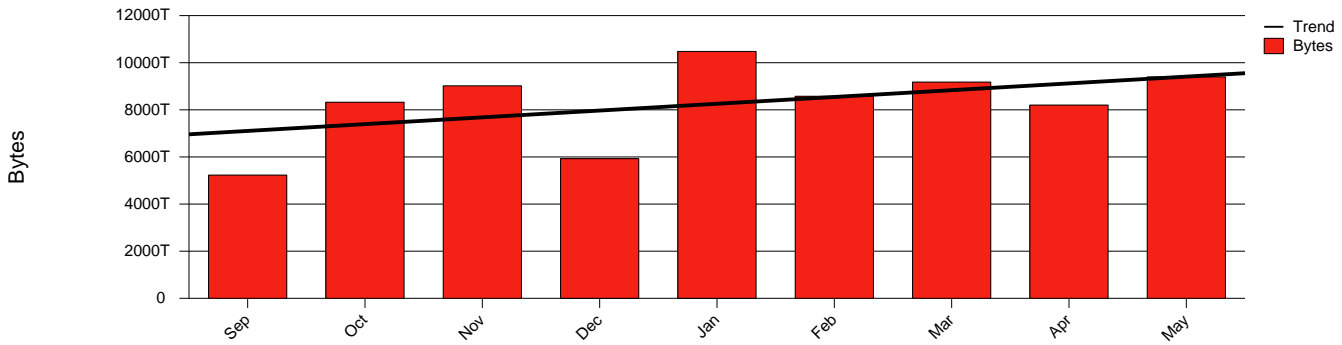


# GigaSunet - Monthly Health Report

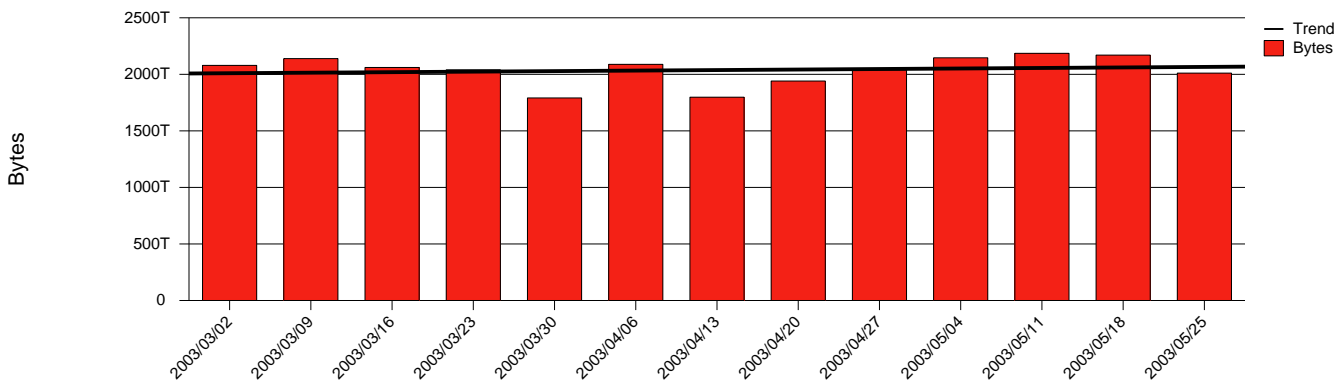
LAN/WAN

Report for 2003/05/31

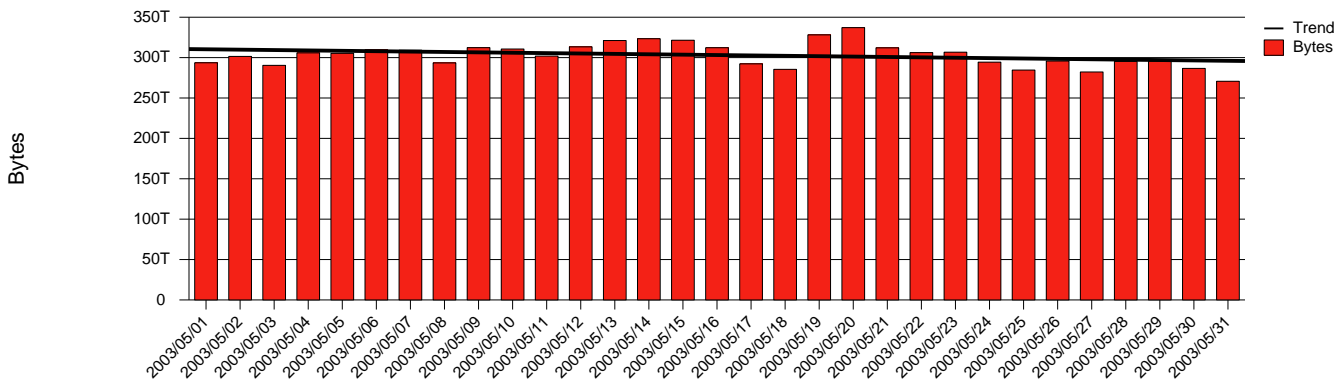
Total Network Volume by Month



Total Network Volume by Week



Total Network Volume by Day



Situations to Watch

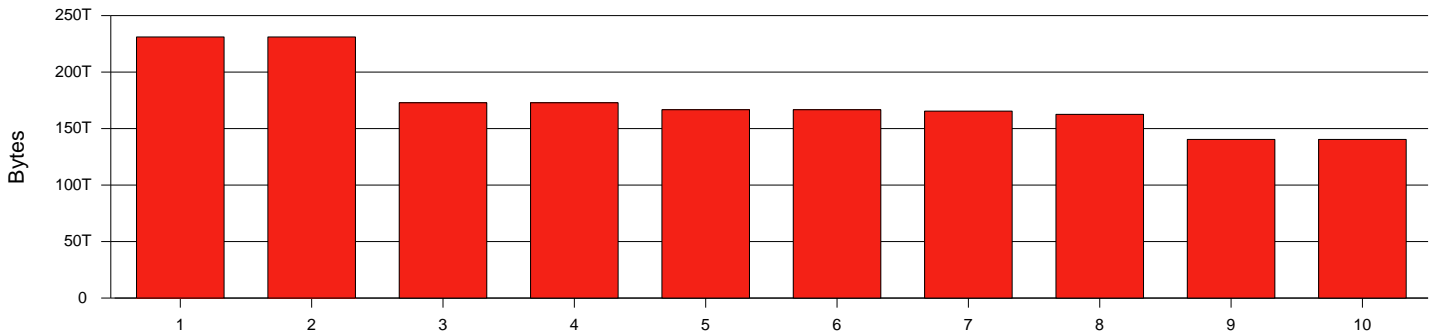
Rank	Element Name	Variable	Threshold	Monthly Average		Days to (from)
			Value	Actual	Predicted	Threshold
1	lulea1-SRP-irf(In)	Errors (% Frames)	5.000	0.000	28.837	Chronic
2	stockholm2-SRP(In)	Errors (% Frames)	5.000	0.000	16.597	Chronic
3	malmo4-SRP(In)	Errors (% Frames)	5.000	0.000	40.144	(288)
4	uppsala1-borlange2(In)	Errors (% Frames)	5.000	0.001	2.411 K	(222)
5	borlange2-uppsala1(In)	Errors (% Frames)	5.000	251.646	95.347	(162)
6	goteborg1-goteborgsdptgix(In)	Volume (Bandwidth %)	80.000	36.091	23.599	465
7	malmo1-SRP-malmodptgix(In)	Volume (Bandwidth %)	80.000	8.087	13.574	Increasing
8	sundsvall1-SRP_DGIX(Out)	Volume (Bandwidth %)	80.000	6.507	10.552	Increasing
9	malmo2-malmodptgix(In)	Volume (Bandwidth %)	80.000	6.188	7.183	Increasing
10	ltu1-SRP(Out)	Volume (Bandwidth %)	80.000	13.235	13.757	Increasing

# Monthly Health Report

Report for 2003/05/31

LAN/WAN

## Volume Leaders



## Volume Leaders in Bytes

Prior			Volume			Bandwidth		Health Index	
Rank	Rank	Element Name	Speed	Bytes	vs Baseline	Avg	Peak	Avg	Peak
1	1	vasteras1-stockholm1(Out)	10.0 Gbs	231.1 T	21.0%	6.9%	14.0%	0.0	0.0
2	2	stockholm1-vasteras1(In)	10.0 Gbs	231.1 T	20.3%	6.9%	14.0%	0.0	0.0
3	4	vasteras1-gavle1(In)	10.0 Gbs	172.9 T	22.2%	5.2%	10.9%	0.0	0.0
4	3	gavle1-vasteras1(Out)	10.0 Gbs	172.9 T	21.3%	5.2%	10.9%	0.0	0.0
5	9	jonkoping1-stockholm1(Out)	10.0 Gbs	166.7 T	50.4%	5.0%	8.2%	0.0	0.0
6	10	stockholm1-jonkoping1(In)	10.0 Gbs	166.7 T	50.7%	5.0%	8.2%	0.0	0.0
7	7	stockholm1-SRP(Out)	2.5 Gbs	165.5 T	14.8%	19.9%	38.7%	0.0	0.0
8	8	stockholm1-SRP(In)	2.5 Gbs	162.6 T	-3.0%	19.6%	35.4%	0.0	0.0
9	13	boras2-jonkoping1(Out)	10.0 Gbs	140.4 T	63.5%	4.2%	7.4%	0.0	0.0
10	14	jonkoping1-boras2(In)	10.0 Gbs	140.4 T	63.5%	4.2%	7.4%	0.0	0.0

## Health Index Leaders

Prior			Health Index				Bandwidth	
Rank	Rank	Element Name	Contributor	Avg	Peak	Avg	Peak	
1	1	trollhattan2-skovde1(In)	Errors	2.0	8.0	0.2%	1.4%	
2	46	borlange2-uppsala1(In)	Errors	1.3	8.0	2.4%	7.3%	
3	3	ki1-SRP(In)	Errors	0.3	8.0	0.5%	3.6%	
4	8	sh1-SRP(In)	Errors	0.1	8.0	0.0%	0.0%	
5	417	trollhattan1-karlstad2(In)	Errors	0.0	8.0	0.1%	1.3%	
6	342	SUNET-SE-stkpr3.sunet.se-POS8(In)	Errors	0.0	8.0	11.9%	19.5%	
7	489	old-stkpr3_UU-FTP-1(In)	Errors	0.0	8.0	11.8%	19.5%	
8	188	karlstad2-trollhattan1(In)	Errors	0.0	8.0	0.1%	0.9%	
9	5	vasteras2-linkoping1(In)	Errors	0.0	8.0	0.0%	0.4%	
10	100	gu2-SRP(In)	Errors	0.0	2.0	0.0%	0.3%	

## Volume Change Leaders

Prior			Volume	
Rank	Rank	Element Name	Bytes	vs Baseline
1	417	trollhattan1-SRP(In)	1.4 T	772.2%
2	255	mah2-SRP(In)	398.6 G	381.6%
3	488	vxu2-SRP(Out)	3.8 T	355.0%
4	282	mh2-SRP(Out)	6.9 G	339.2%
5	75	goteborg1-goteborgsdptgix(In)	75.0 T	326.1%
6	414	trollhattan1-karlstad2(Out)	2.8 T	323.8%
7	179	karlstad2-trollhattan1(In)	2.8 T	323.6%
8	297	oru2-SRP(In)	18.1 T	308.8%
9	403	sundsvall1-SRP_DGIX(In)	13.9 T	307.8%
10	101	halmstad2-SRP(In)	22.7 T	286.8%

## Health Index Change Leaders

Prior			Health Index		
Rank	Rank	Element Name	Avg	Prior	Change
1	422	trollhattan2-skovde1(In)	1.96	8.00	-6.04
2	57	borlange2-uppsala1(In)	1.30	0.00	1.30
3	5	ki1-SRP(In)	0.31	0.02	0.29
4	6	sh1-SRP(In)	0.07	0.00	0.07
5	9	irf2-SRP(In)	0.00	0.03	-0.03
6	7	liu1-SRP(In)	0.00	0.01	-0.01
7	21	trollhattan1-karlstad2(In)	0.00	0.00	0.00
8	344	SUNET-SE-stkpr3.sunet.se-POS8(In)	0.00	0.00	0.00
9	489	old-stkpr3_UU-FTP-1(In)	0.00	0.00	0.00
10	20	karlstad2-trollhattan1(In)	0.00	0.00	0.00