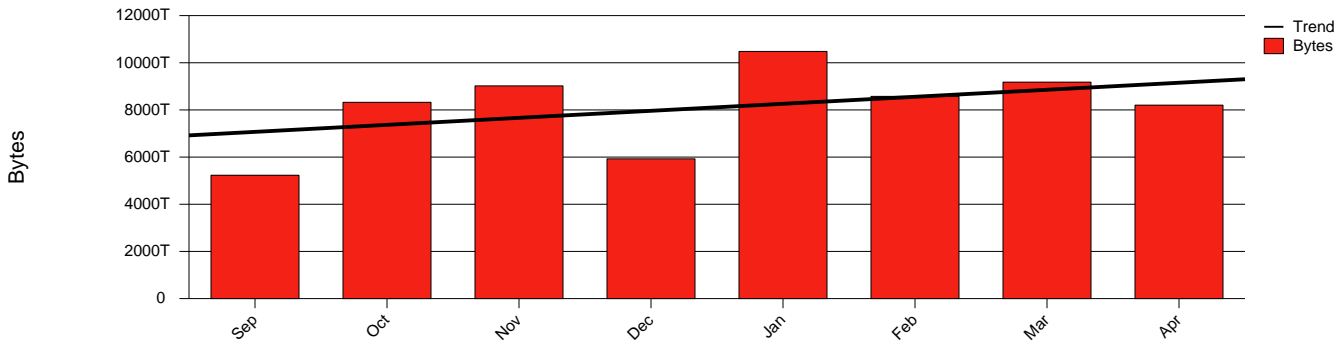


# GigaSunet - Monthly Health Report

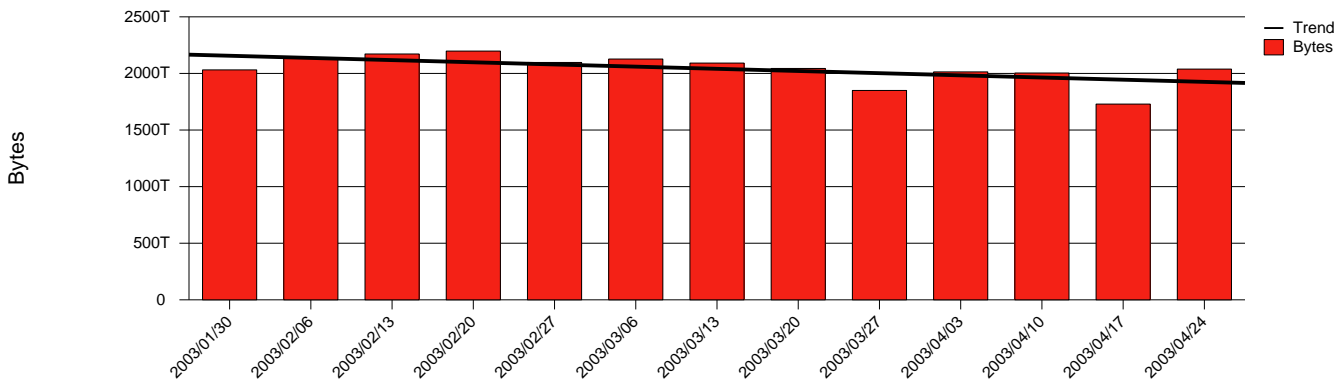
LAN/WAN

Report for 2003/04/30

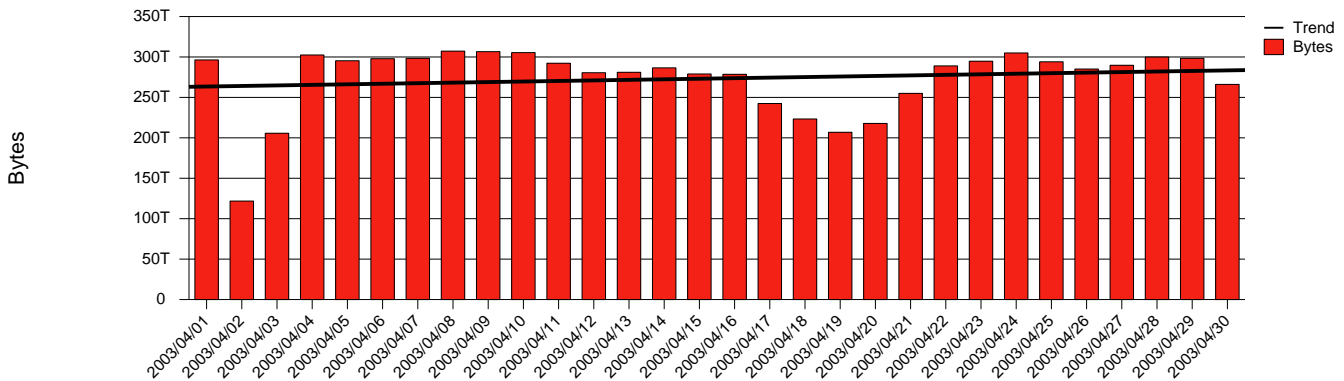
Total Network Volume by Month



Total Network Volume by Week



Total Network Volume by Day



Situations to Watch

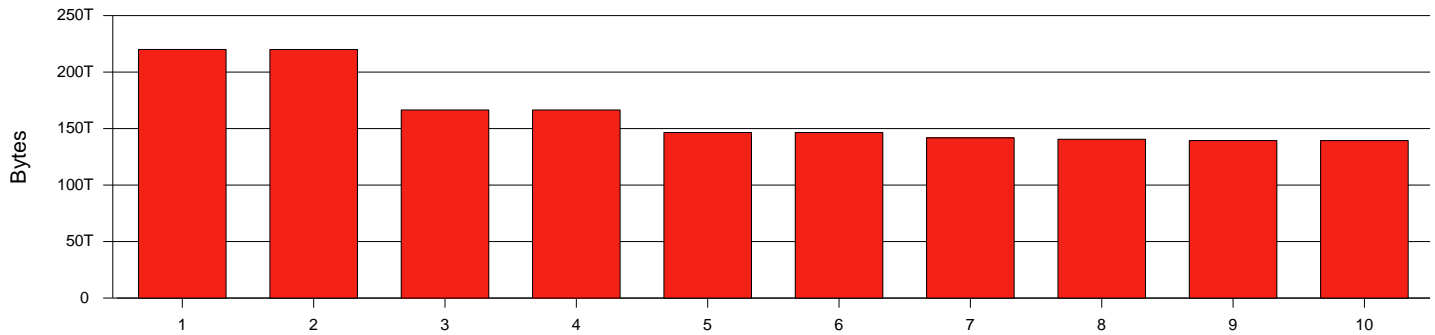
Rank	Element Name	Variable	Threshold	Monthly Average		Days to (from)
			Value	Actual	Predicted	Threshold
1	lulea1-SRP-irf(In)	Errors (% Frames)	5.000	0.000	42.978	(351)
2	stockholm2-SRP(In)	Errors (% Frames)	5.000	0.000	24.722	(315)
3	mah2-SRP(In)	Errors (% Frames)	5.000	0.000	8.902	(218)
4	malmo4-SRP(In)	Errors (% Frames)	5.000	0.000	57.253	(193)
5	uppsala1-borlange2(In)	Errors (% Frames)	5.000	0.001	3.262 K	(167)
6	goteborg1-goteborgsdptgix(In)	Volume (Bandwidth %)	80.000	29.808	13.522	864
7	malmo1-SRP-malmodptgix(In)	Volume (Bandwidth %)	80.000	11.313	14.507	867
8	sundsvall1-SRP_DGIX(Out)	Volume (Bandwidth %)	80.000	8.674	11.704	Increasing
9	malmo2-malmodptgix(In)	Volume (Bandwidth %)	80.000	4.897	6.872	Increasing
10	goteborg1-goteborgsdptgix(Out)	Volume (Bandwidth %)	80.000	6.136	8.351	Increasing

# GigaSunet - Monthly Health Report

LAN/WAN

Report for 2003/04/30

## Volume Leaders



## Volume Leaders in Bytes

Prior			Speed	Volume		Bandwidth		Health Index	
Rank	Rank	Element Name		Bytes	vs Baseline	Avg	Peak	Avg	Peak
1	2	vasteras1-stockholm1(Out)	10.0 Gbs	220.0 T	18.3%	7.0%	12.6%	0.0	0.0
2	1	stockholm1-vasteras1(In)	10.0 Gbs	220.0 T	17.5%	7.0%	12.6%	0.0	0.0
3	4	gavle1-vasteras1(Out)	10.0 Gbs	166.5 T	20.0%	5.3%	10.0%	0.0	0.0
4	5	vasteras1-gavle1(In)	10.0 Gbs	166.5 T	21.0%	5.3%	9.9%	0.0	0.0
5	9	lulea1-gavle1(Out)	10.0 Gbs	146.5 T	21.4%	4.7%	8.7%	0.0	0.0
6	8	gavle1-lulea1(In)	10.0 Gbs	146.5 T	21.9%	4.7%	8.7%	0.0	0.0
7	10	stockholm1-SRP(Out)	2.5 Gbs	141.8 T	0.2%	18.2%	38.7%	0.0	0.0
8	3	stockholm1-SRP(In)	2.5 Gbs	140.5 T	-16.5%	18.0%	31.4%	0.0	0.0
9	16	jonkoping1-stockholm1(Out)	10.0 Gbs	139.4 T	34.2%	4.4%	8.3%	0.0	0.0
10	17	stockholm1-jonkoping1(In)	10.0 Gbs	139.4 T	34.5%	4.4%	8.3%	0.0	0.0

## Health Index Leaders

Prior			Contributor	Health Index		Bandwidth	
Rank	Rank	Element Name		Avg	Peak	Avg	Peak
1	1	trollhattan2-skovde1(In)	Errors	8.0	8.0	0.1%	0.6%
2	6	irf2-SRP(In)	Errors	0.0	8.0	0.0%	0.0%
3	201	ki1-SRP(In)	Errors	0.0	8.0	0.7%	3.7%
4	467	vasteras2-linkoping1(In)	Errors	0.0	8.0	0.0%	1.3%
5	139	hik2-SRP(In)	Errors	0.0	8.0	0.0%	1.8%
6	7	sh1-SRP(In)	Errors	0.0	4.0	0.0%	0.0%
7	225	linkoping1-vasteras2(In)	Errors	0.0	8.0	0.0%	0.9%
8	15	linkoping1-SRP(In)	Errors	0.0	8.0	0.0%	0.0%
9	388	stockholm3-srp4(In)	Errors	0.0	2.0	0.0%	0.0%
10	13	mdh2-SRP(In)	Errors	0.0	8.0	0.0%	0.8%

## Volume Change Leaders

Prior			Volume	
Rank	Rank	Element Name	Bytes	vs Baseline
1	417	trollhattan1-SRP(In)	36.3 G	556.9%
2	488	vxu2-SRP(Out)	2.6 T	523.9%
3	403	sundsvall1-SRP_DGIX(In)	12.1 T	478.6%
4	75	goteborg1-goteborgsdptgix(In)	58.1 T	457.1%
5	255	mah2-SRP(In)	175.3 G	304.9%
6	119	hig2-SRP(In)	9.5 T	248.2%
7	187	kau2-SRP(In)	1.2 T	228.2%
8	184	karlstad2-SRP(Out)	1.1 T	223.8%
9	391	stockholm4-srp2(In)	2.3 T	212.5%
10	414	trollhattan1-karlstad2(Out)	1.2 T	206.8%

## Health Index Change Leaders

Prior			Health Index		
Rank	Rank	Element Name	Avg	Prior	Change
1	4	uppsala1-borlange2(In)	0.00	1.16	-1.16
2	1	linkoping2-SRP(In)	0.00	1.11	-1.11
3	2	linkoping2-SRP(Out)	0.00	0.80	-0.80
4	5	sundsvall2-SRP(In)	0.00	0.05	-0.05
5	8	irf2-SRP(In)	0.01	0.03	-0.03
6	15	sh1-SRP(In)	0.00	0.01	-0.01
7	13	liu1-SRP(In)	0.00	0.01	-0.01
8	215	ki1-SRP(In)	0.01	0.00	0.01
9	16	chalmers2-SRP(In)	0.00	0.00	-0.00
10	20	his1-SRP(In)	0.00	0.00	-0.00